

Einrohr-Mittenanschluss-Armatur mit Thermostat-Regler Montage- und Bedienungsanleitung

NL Een-pijps middenaansluit-fitting
Montage- en gebruikshandleiding

HU Egycsöves középcsatlakozós armatúra
Szerelési és kezelé si útmutató

FR Armature de prise médiane monotube
Instructions de montage et d'utilisation

SE Vålva de conexiön central de un tubo
Monterings- och bruksanvisning

PL Armatúra z jednorurowym podłączeniem centralnym
Instrukcja montažu i obsługi

PT Vålva de ligação central de tubo simples
Manual de Instruções de Montagem e de Utilização

ES Vålva de conexiön central de un tubo
Instrucciones de montaje y servicio

DK Enkeltrørsarmatur til midtertilslutning
Monterings- og betjeningsvejledning

NO Etrørsarmatur for tilkobling på midten
Monterings- og bruksanvisning

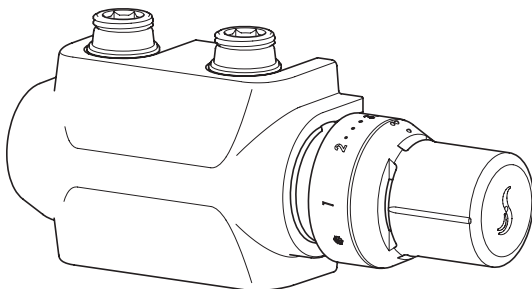
GB Mono-tube centre connection valve
Assembly and Operating Construction

IT Raccordo di collegamento centrale a tubo singolo
Istruzioni per il montaggio e l'uso

CZ Jednopotrubní armatúra se středovou přípojkou
Návod k montáži a obsluze

SK Stredová prípojka - jedno potrubie
Návod na montáž a obsluhu

RUS РУКОВОДСТВО ПО МОНТАЖУ И ЭКСПЛУАТАЦИИ
Руководство по монтажу и эксплуатации



Packungsinhalt / Content



Werkzeuge / Tools



13, 27,
30 + 32mm



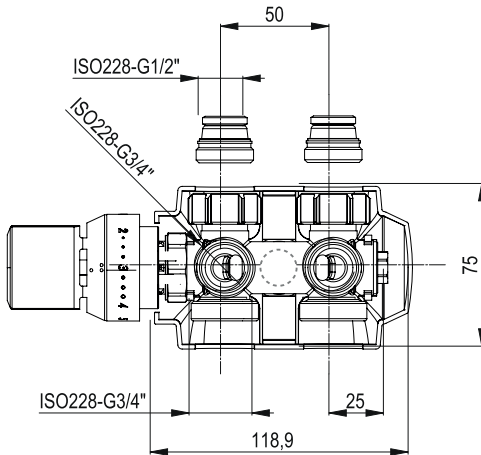
4, 6, 10
+ 12mm



Achtung / Attention

Reinigung per Hand mit Wasser/ clean by hand with
water only

Maße / Dimensions

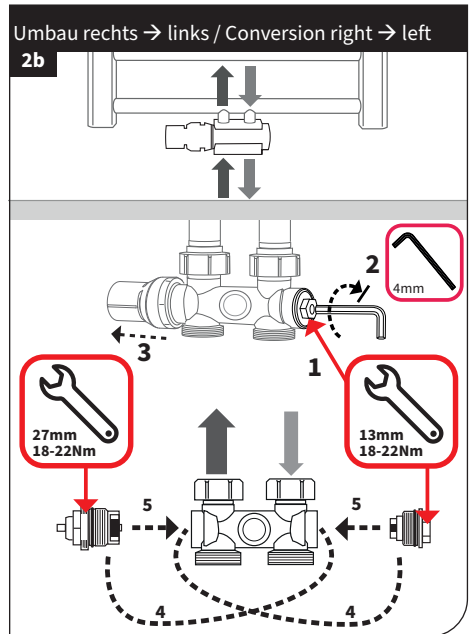
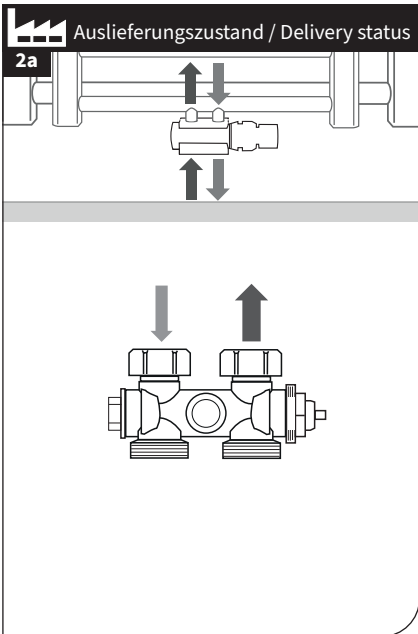
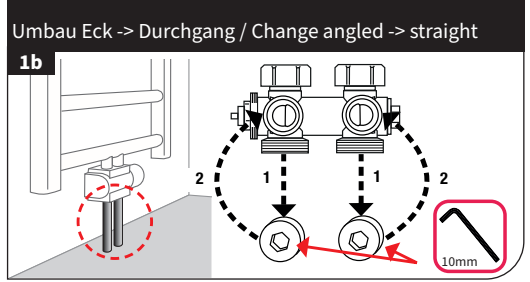
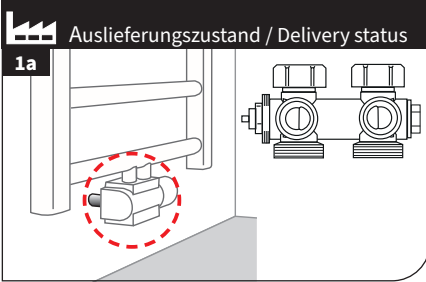


Lieferprogramm / product portfolio

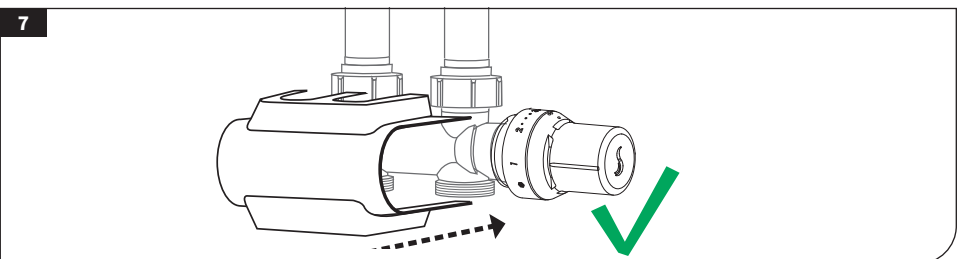
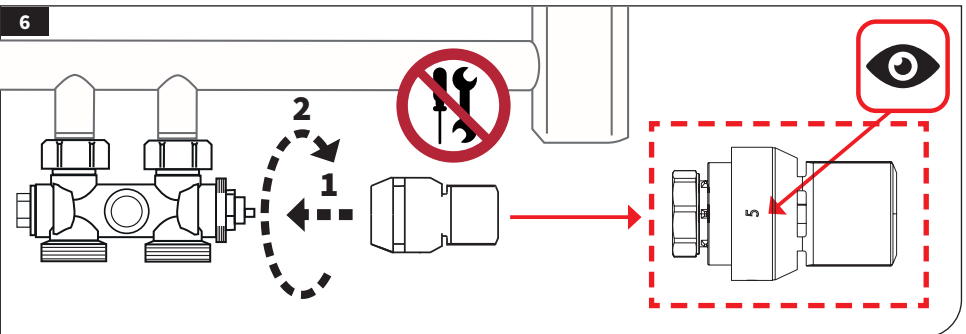
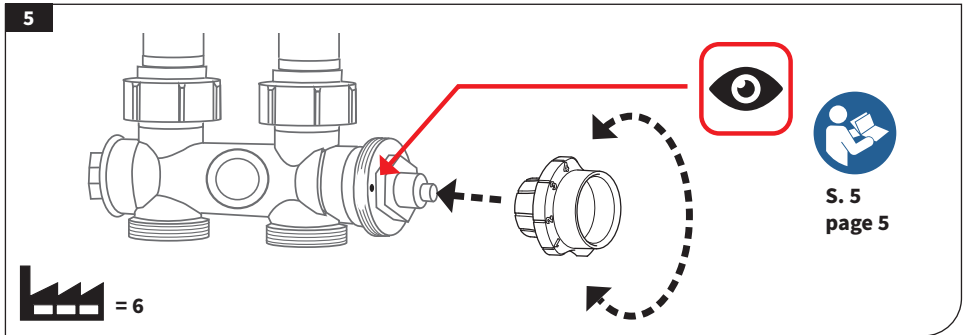
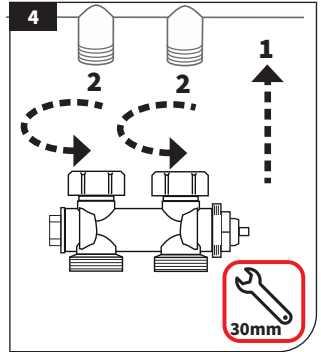
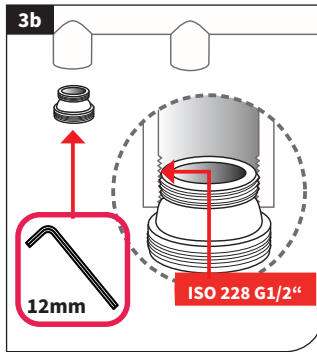
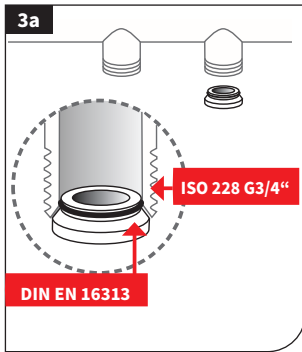
Einrohr-Mittenanschluss-Armatur mit Thermostatregler/ One pipe central point valve with th. head

KBN	Ausführung/ Finish	VPE / packaging unit
CEMAW	weiß/ white	10
CEMAS	schwarz / black matt	10

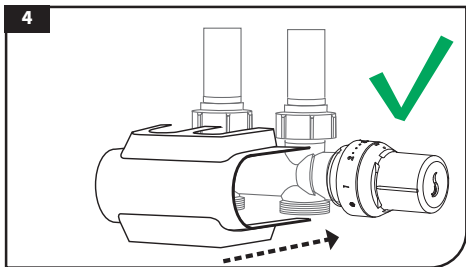
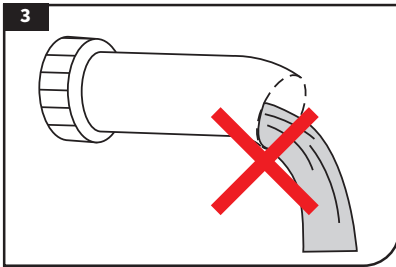
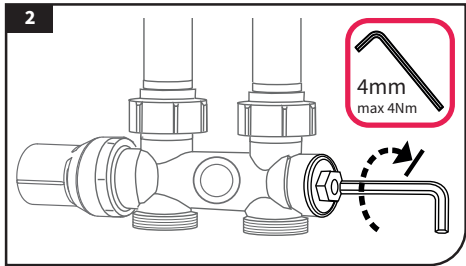
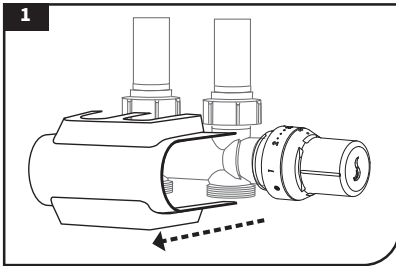
Montage- und Bedienung / Installation and operation



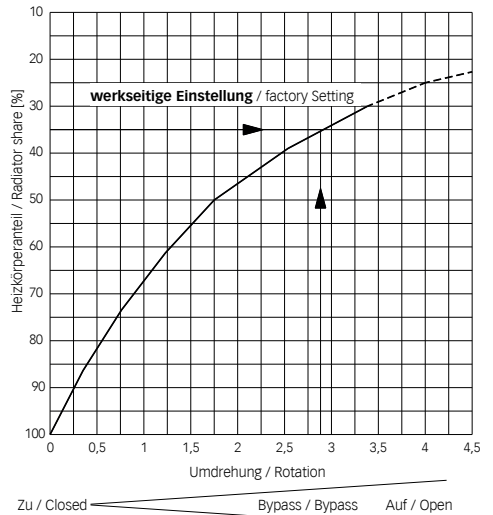
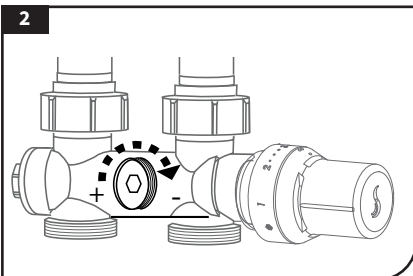
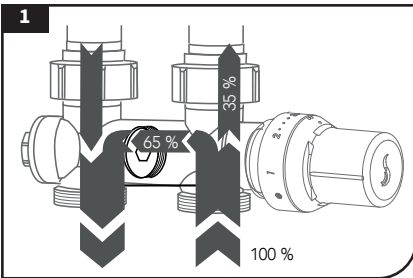
Voreinstellung / Pre-adjustment



Absperrung / Shut-off



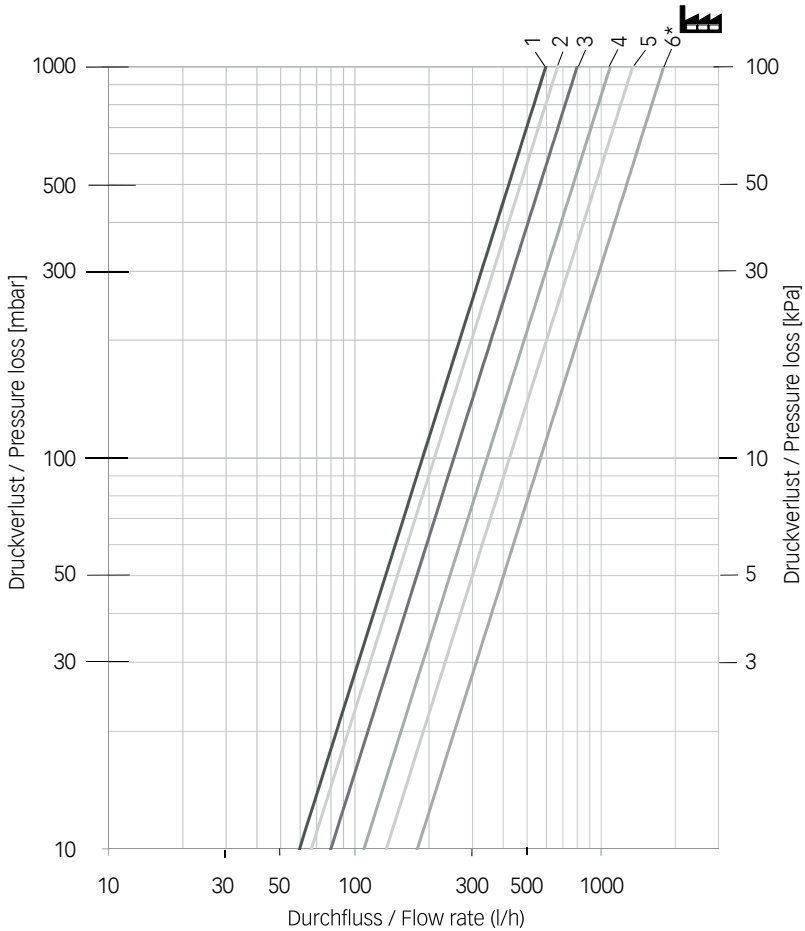
Einstellung Bypass / bypass setting



Umdrehung = Linksdrehung aus Stellung „Zu“ / Rotation = anticlockwise turn from "Closed" position

* 100 % Heizkörperanteil = Zweirohrbetrieb / * 100 % radiator share = bi-tube operation

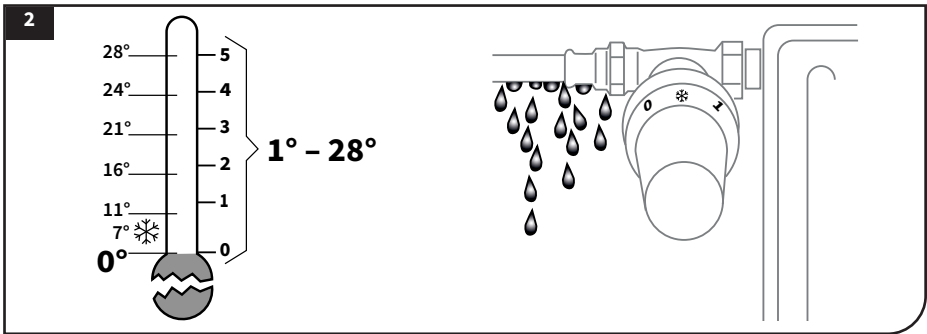
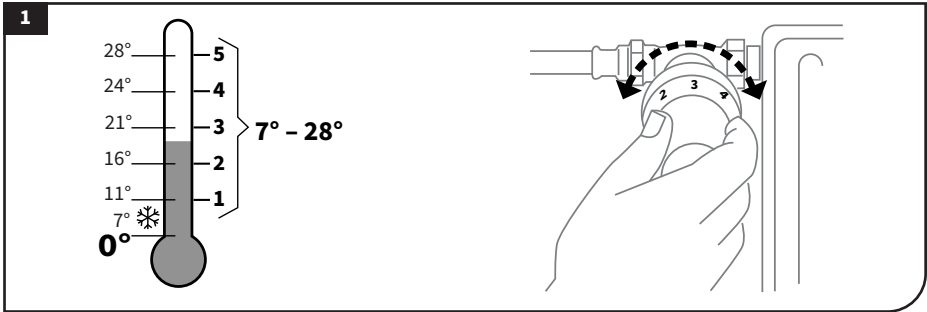
Druckverlustdiagramm / pressure loss graph



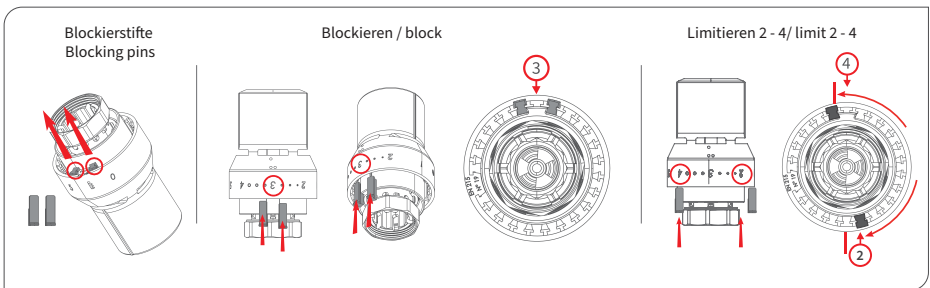
* Werkseinstellung / Factory setting

Voreinstellung / Adjustment	1	2	3	4	5	6
Kvs	0,55	0,59	0,70	0,99	1,39	1,71

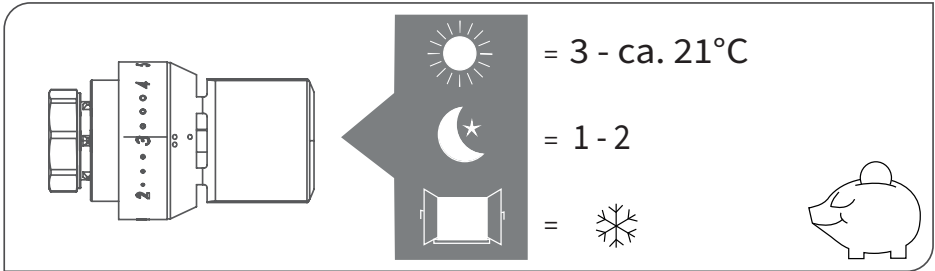
Bedienung Thermostatregler Operation of thermostatic controller



Blockieren und limitieren / block and limit



Hinweise / Please note



Besonders zu beachten sind / Refer in particular to

DIN 18 380 Heizanlagen und zentrale Wassererwärmungsanlagen / Heating systems and central hot water supply systems

VDI 2035 Steinbildung in Trinkwassererwärmungsanlagen und Warmwasserheizungsanlagen / Scale formation in domestic water heating systems and water heating systems

BGV Berufsgenossenschaftliche Vorschriften (Unfallverhütungsvorschriften)/ German Professional Association Regulations (accident prevention regulations)

DIN = The German Institute for Standardisation / VDI = Association of German Engineers



Arbeiten an Heizungs- und Trinkwasseranlagen müssen von qualifiziertem Fachpersonal und in Übereinstimmung mit den jeweils gültigen Vorschriften, Richtlinien und Regeln der Technik ausgeführt werden.

Work on heating systems must only be done by qualified professional personnel and in accordance with the respective applicable regulations, guidelines and rules of engineering.



COSMO GMBH

Brandstücken 31 · 22549 Hamburg

info@cosmo-info.de

www.cosmo-info.de

Sämtliche Bild-, Produkt-, Maß- und Ausführungsangaben entsprechen dem Tag der Drucklegung. Technische Änderungen vorbehalten. Modell- und Produktsprüche können nicht geltend gemacht werden / All image, product, dimensional and design specifications are correct on the date of printing. Subject to technical alterations. Model and product claims cannot be asserted COSMO Manual 11/25/© COSMO GmbH