

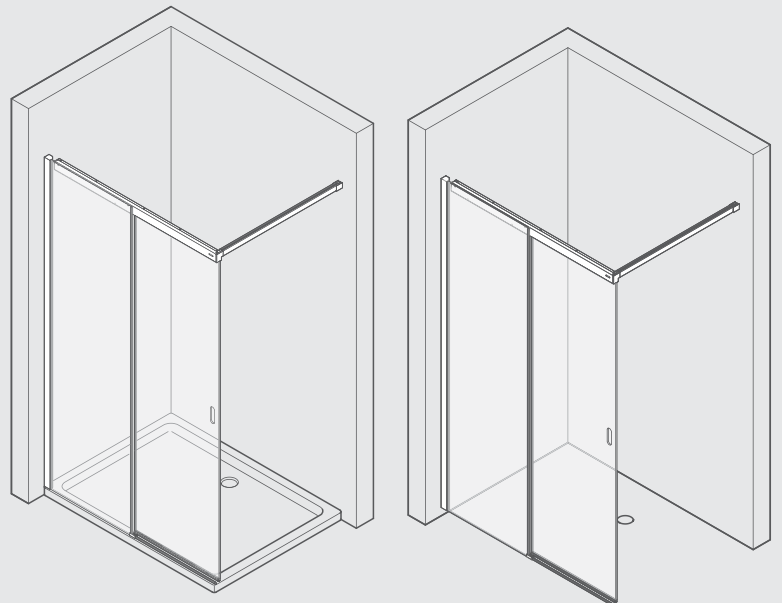
VIGOUR

Die Marke für das ganze Bad

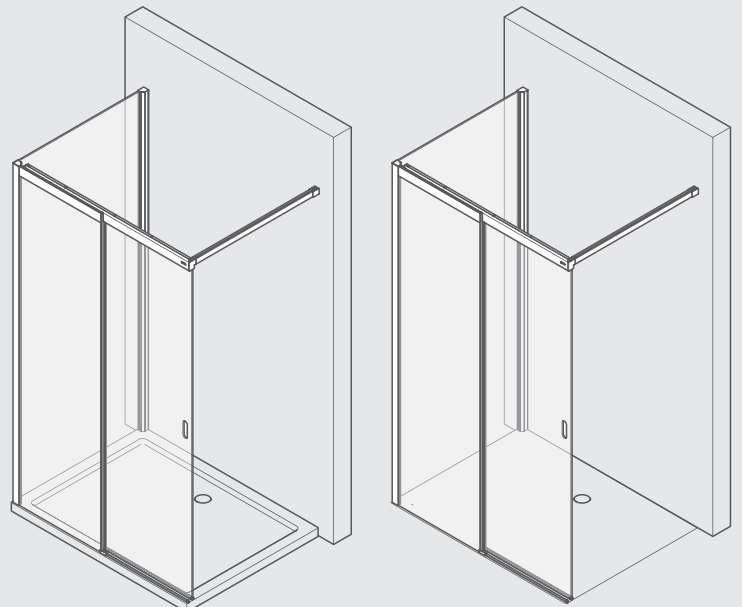
V5 • Duschabtrennungen

V5WG_L/R

- Ⓓ WALK IN Gleittür
- ⒼⒷ WALK IN sliding door
- ⒽⒻ WALK IN drzwi przesuwne



V5WG_L/R + V5WGS_L/R



Montageanleitung

Assembling instructions

Instrukcja montażu

VF-ST2F L/R
VF-WKL/R

D**Wichtig!**

Bitte überprüfen Sie Ihre Duschkabine vor der Montage auf Transportschäden. Für Schäden an bereits montierten Produkten kann keine Haftung übernommen werden.

Zur Reinigung benutzen Sie ein PH-neutrales Reinigungsmittel oder den von uns empfohlenen Spezialreiniger. Verwenden Sie keine scheuernden, alkalischen, säure- oder chlorhaltigen Reinigungsmittel sowie Oxidations- und Lösungsmittel.

Zeichnungen beziehen sich auf Linksanschlag. Bei Rechtsanschlag beginnen Sie auf der rechten Seite.

Werkzeuge für die Montage:

Wasserwaage, Bleistift, Körner, Hammer, Bohrmaschine, Steinbohrer 6mm, Kreuzschraubenzieher, Schraubenzieher, Stahlbohrer 3mm, Silikon.

Achtung: Kontrollieren Sie die Beschaffenheit der Wand, Licht-, Gas- und Wasserleitungen.

Die mit der Kabine mitgelieferten Dübel und Schrauben sind nur für sämtliche Beton- und Mauerwerkbaustoffe geeignet. Für Wände anderer Bauart müssen Sie dafür geeignetes Befestigungsmaterial verwenden.

Verwenden Sie nur Silikon oder Dichtungsmasse, welche für die Oberflächen und Materialien geeignet sind, an denen die Duschkabine montiert wird. Die Befestigung an der Wand, die Montage und die Silikonierung der Duschkabine müssen sorgfältig und professionell durchgeführt werden. Falls Fragen bezüglich der Montage entstehen sollten, wenden Sie sich bitte an Ihren Wiederverkäufer.

GB**Important!**

Before assembling the shower, please control if the product has been damaged by the transport. We don't assume responsibility for damaged products which are already assembled.

For cleaning use a pH-neutral cleaning agent or the special cleaner recommended by us. Not to use are solvents, as well as alkaline, solvent -, acid- and chloric or scrubbing agents.

Drawing indicates left side hinge. For right side hinge please start installation on right side.

Required assembly tools:

Water level, pencil, prick punch, hammer, drill, drill 6 mm, cross-shaped screwdriver, screwdriver, steeldrill 3mm, silicon.

Attention: please ensure to check the wall condition and the position of electrical wiring, gas and water pipe.

Plugs and screws, provided with the shower enclosure, are only suitable for masonry walls. For different wall constructions and material types, please use the appropriate fastening fixtures.

Use only the suitable silicones and sealants for the surfaces and materials on which the shower enclosure will be installed. Erection, installation, fixing on the wall and sealing of the shower enclosure must be properly done according to good practice. In case of doubt on erection and installation procedures, please contact the reseller.

PL**Ważne!**

Przed rozpoczęciem montażu kabiny należy sprawdzić pod kątem ewentualnych uszkodzeń transportowych. Nie ponosi się odpowiedzialności za szkody wykryte na własnie montowanych produktach.

Do mycia i pielęgnacji proszę używać środków czyszczących o odczynie PH obojętnym lub polecany przez nas specjalny preparat. Nie należy stosować rozpuszczalników, jak również preparatów alkalicznych, kwaśnych, zawierających chlor lub posiadających właściwości ściernie.

Rysunek dotyczy zawiasu lewego. W przypadku zawiasu prawego należy rozpocząć od strony prawej.

Narzędzia niezbędne do montażu:

poziomica, ołówek, punktak, młotek, wiertarka, wiertło do kamienia 6 mm, śrubokręt krzyżakowy, śrubokręt, wiertło do stali 3 mm.

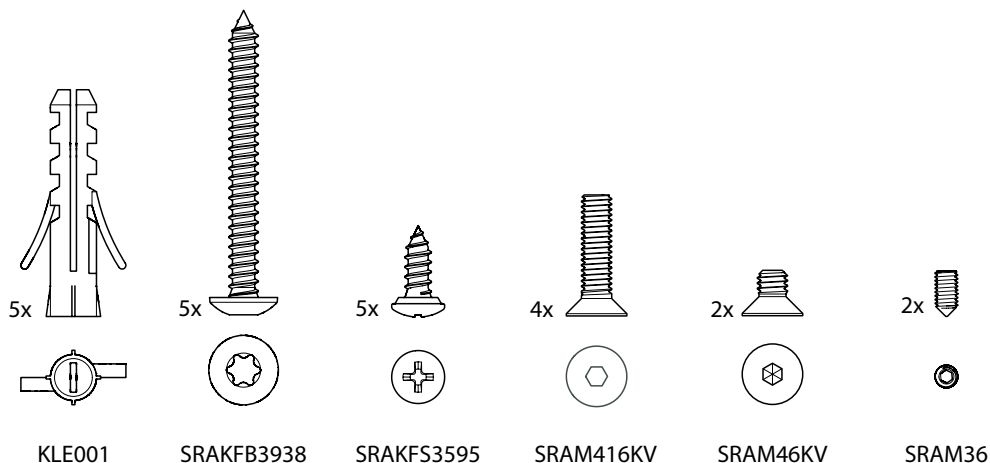
Uwaga! Proszę sprawdzić jakość i stan ściany oraz przebieg instalacji elektrycznej, gazowej i wodnej.

Dostarczone w komplecie z kabiną kołki rozporowe i wkręty nadają się wyłącznie do ścian murowanych. Do ścian wykonanych w systemie lekkiej zabudowy lub innych należy zastosować odmienne systemy mocowań.

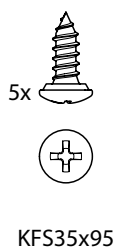
Proszę zwrócić uwagę na to, aby zastosowany został rodzaj silikonu właściwy dla powierzchni na jakiej zamontowano kabinę. Montaż kabiny i jej uszczelnienie musi zostać wykonane zgodnie z instrukcją! W wypadku wątpliwości prosimy zwrócić się o pomoc do dystrybutora lub naszego przedstawicielstwa.

i

V5WG



V5GFS



i



D Beachten
GB Note
PL Uwaga:



D Wartezeit: 24 h
GB Waiting time 24 h
PL Czas oczekiwania 24 h



D Innen / Nassbereich
GB Inside / damp area
PL Wewnątrz / w wilgotnej strefie



D Türe nicht öffnen
GB Don't open the door
PL Nie otwierać drzwi



D Falsch
GB Wrong
PL Nieprawidłowy



D Nicht duschen
GB Don't shower
PL Nie bierz prysznic



D Richtig
GB Right
PL W prawo



D Wasserwaage
GB Spirit level
PL Poziomica

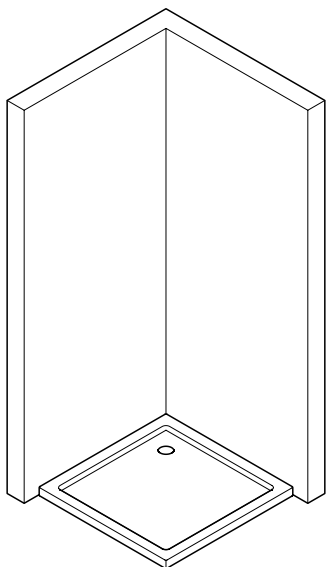


D Achtung
GB Attention
PL Uwaga



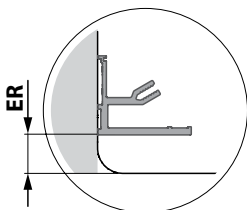
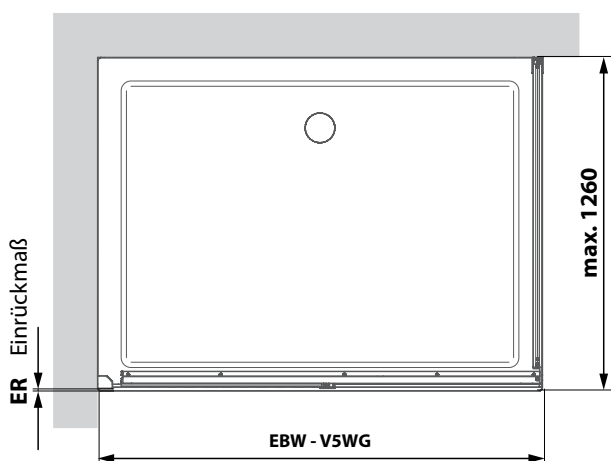
D Einstellung Scharnier:
Tür öffnen / schließen
GB Hinge adjustment:
door opening/closing
PL Regulacja zawiasu:
otwieranie / zamykanie drzwi

i

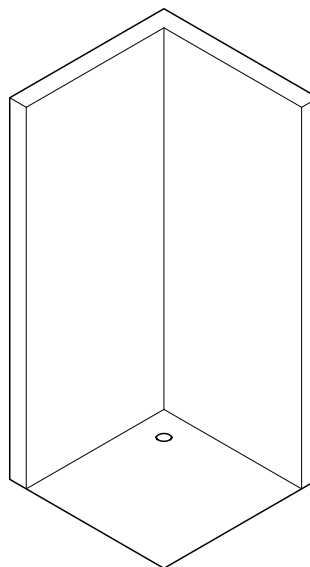
Artikel für Wannenmontage | Article for installation on shower tray | Kabina nawannowa

Wanne, Einbaumass Wanne (EBW)

V5WG	1000	1100	1200	1300
EBW	983-1008	1083-1108	1183-1208	1283-1308
ER	7	7	7	7

V5WG	1400	1500	1600	1700	1800
EBW	1383-1408	1483-1508	1583-1608	1683-1708	1783-1808
ER	7	7	7	7	7

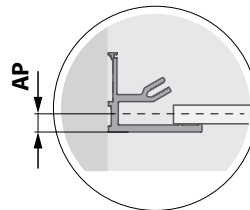
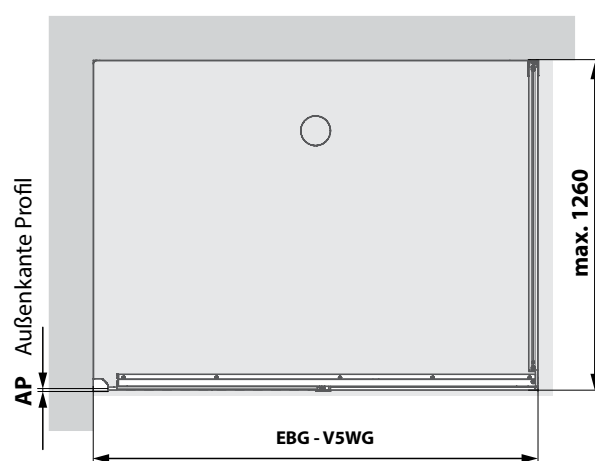


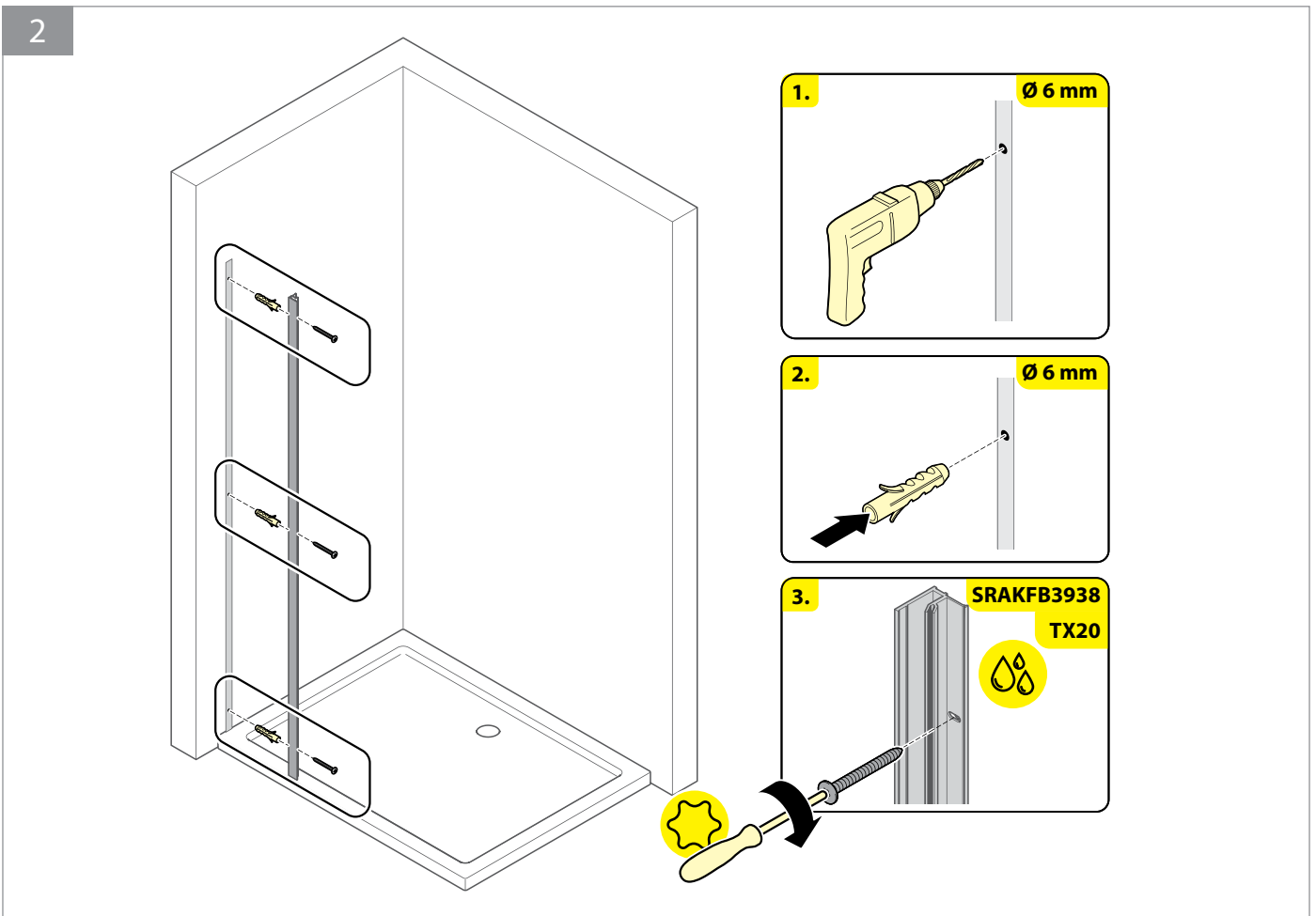
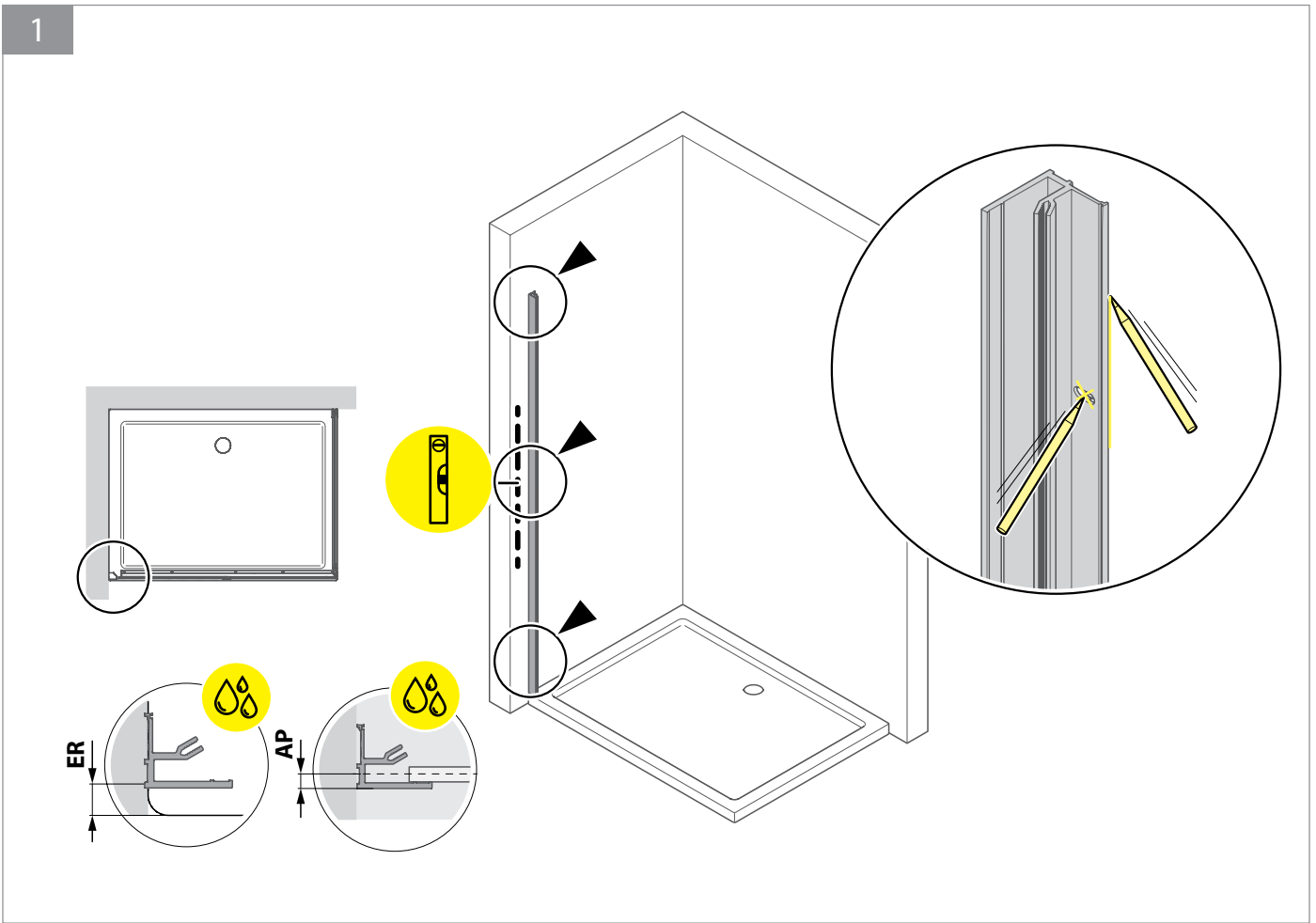
Der Artikel V5WG ist zwar speziell für die Montage auf Duschwannen ausgelegt. Sollten Sie ihn dennoch für eine Bodenmontage "Glasmitte" einsetzen wollen, so finden Sie hierzu mit der Bezeichnung EBG die Maßangaben für diesen Fall.


Bodenmontage *Glasmitte* (EBG)

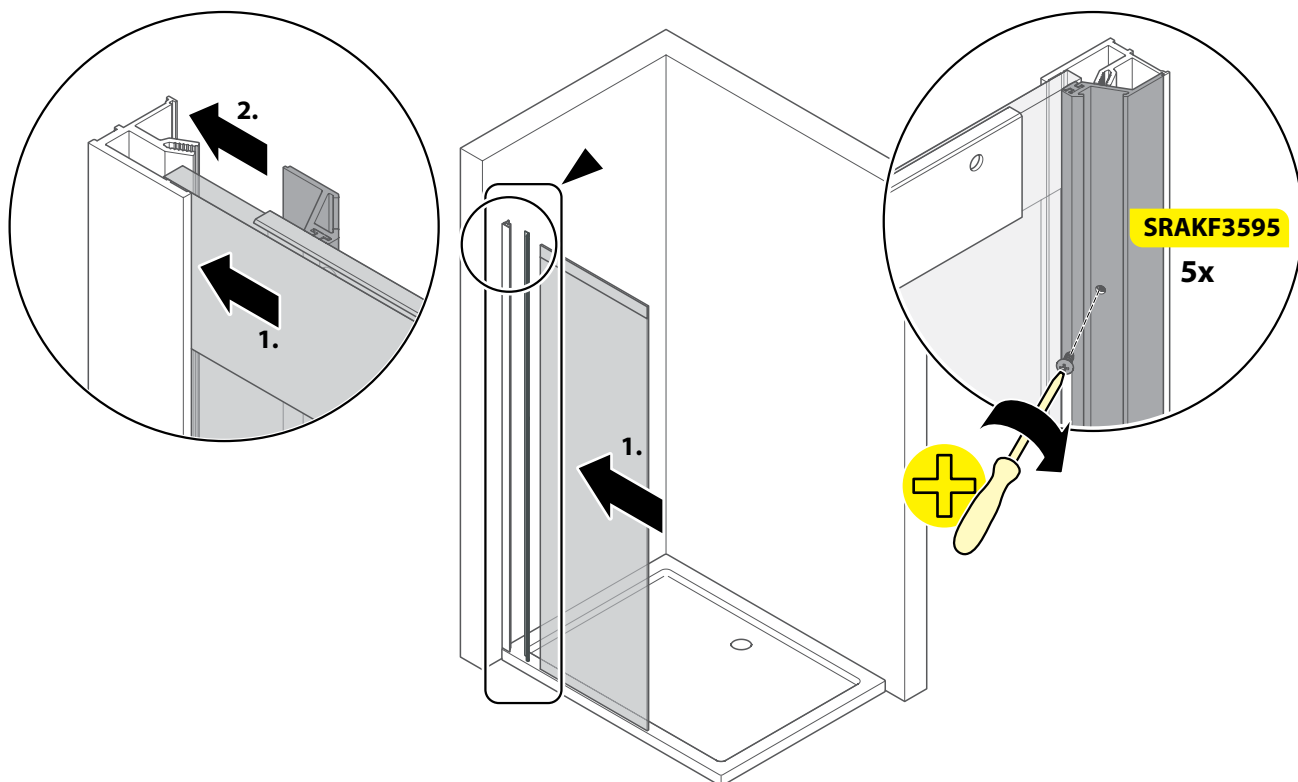
V5WG	1000	1100	1200	1300
EBG	969-994	1069-1094	1169-1194	1269-1294
AP	7,5	7,5	7,5	7,5

V5WG	1400	1500	1600	1700	1800
EBG	1369-1394	1469-1494	1569-1594	1669-1694	1769-1794
AP	7,5	7,5	7,5	7,5	7,5

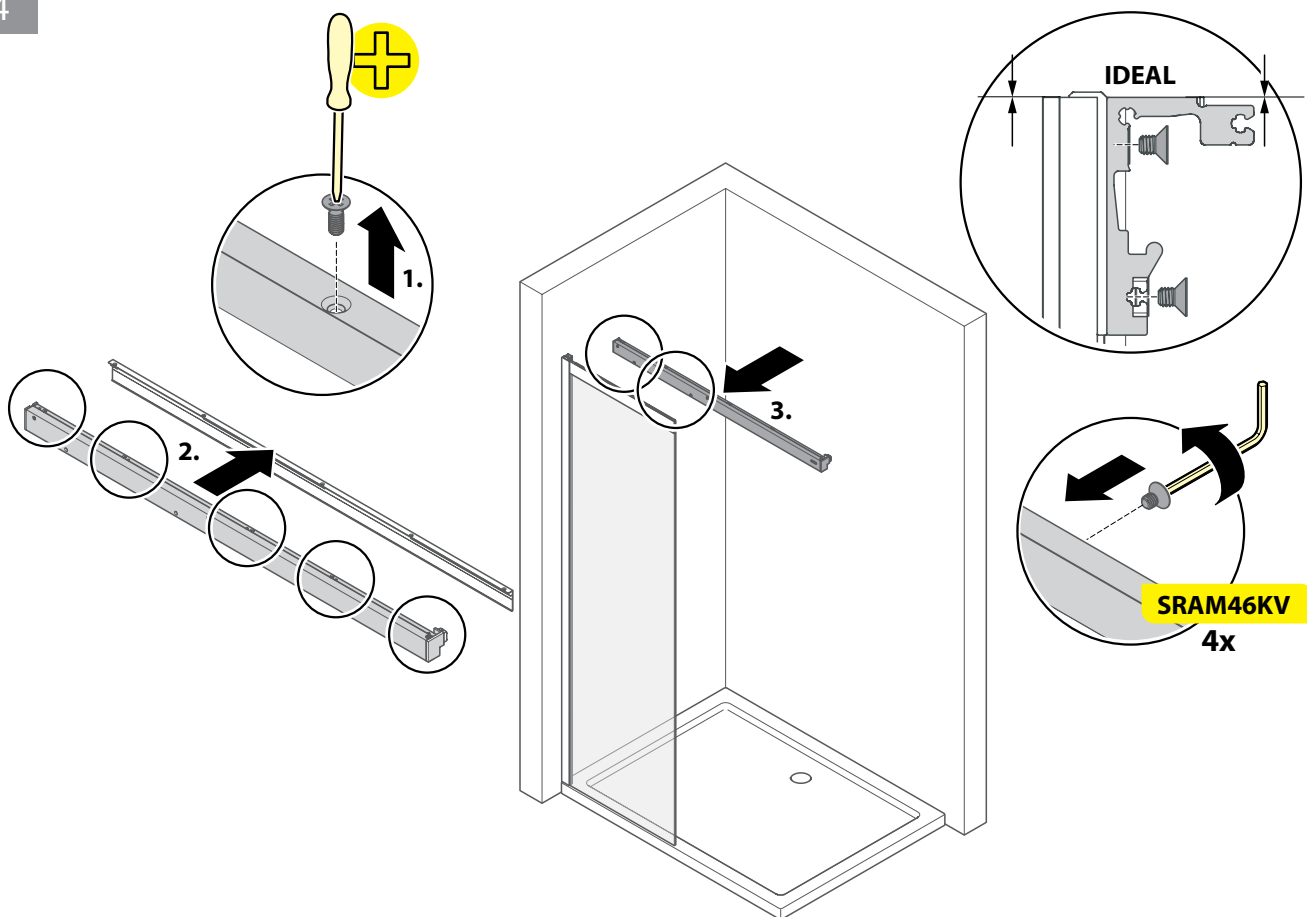




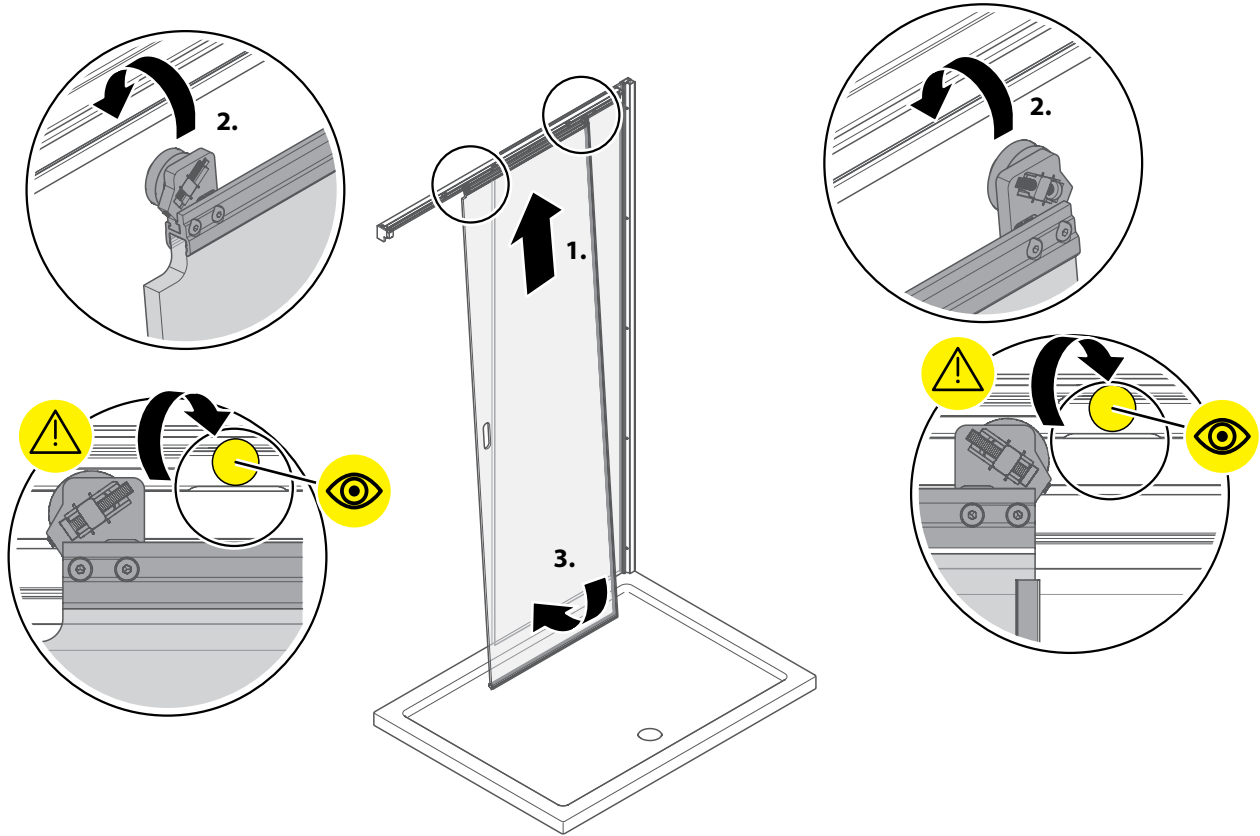
3



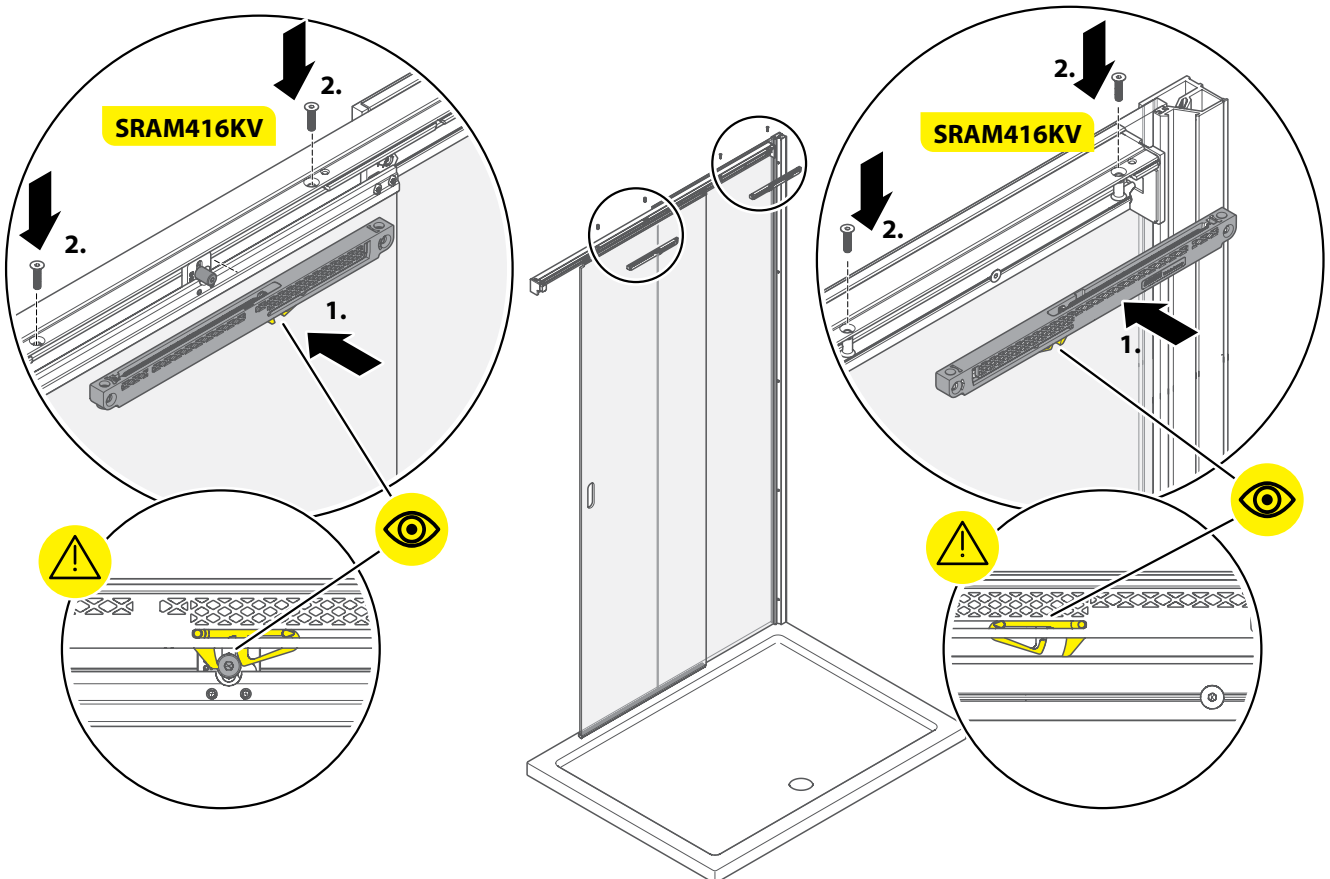
4



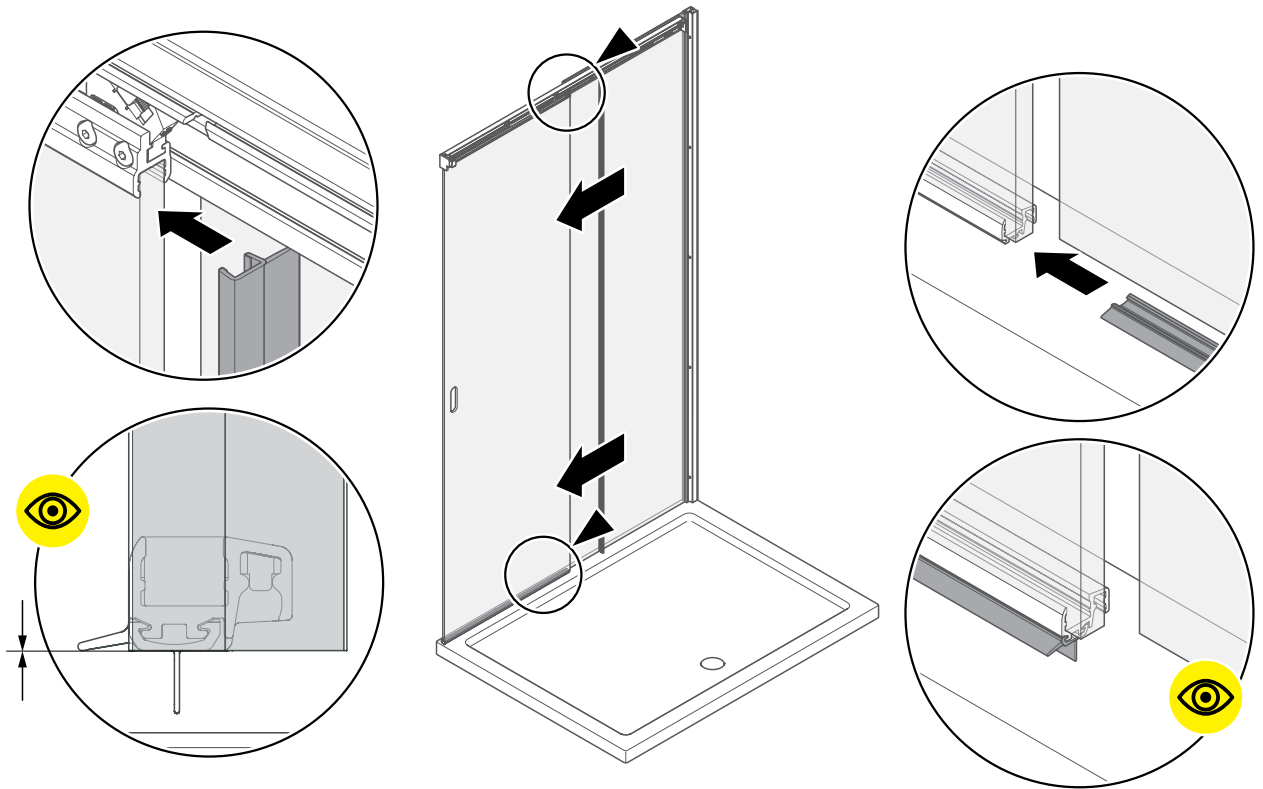
5



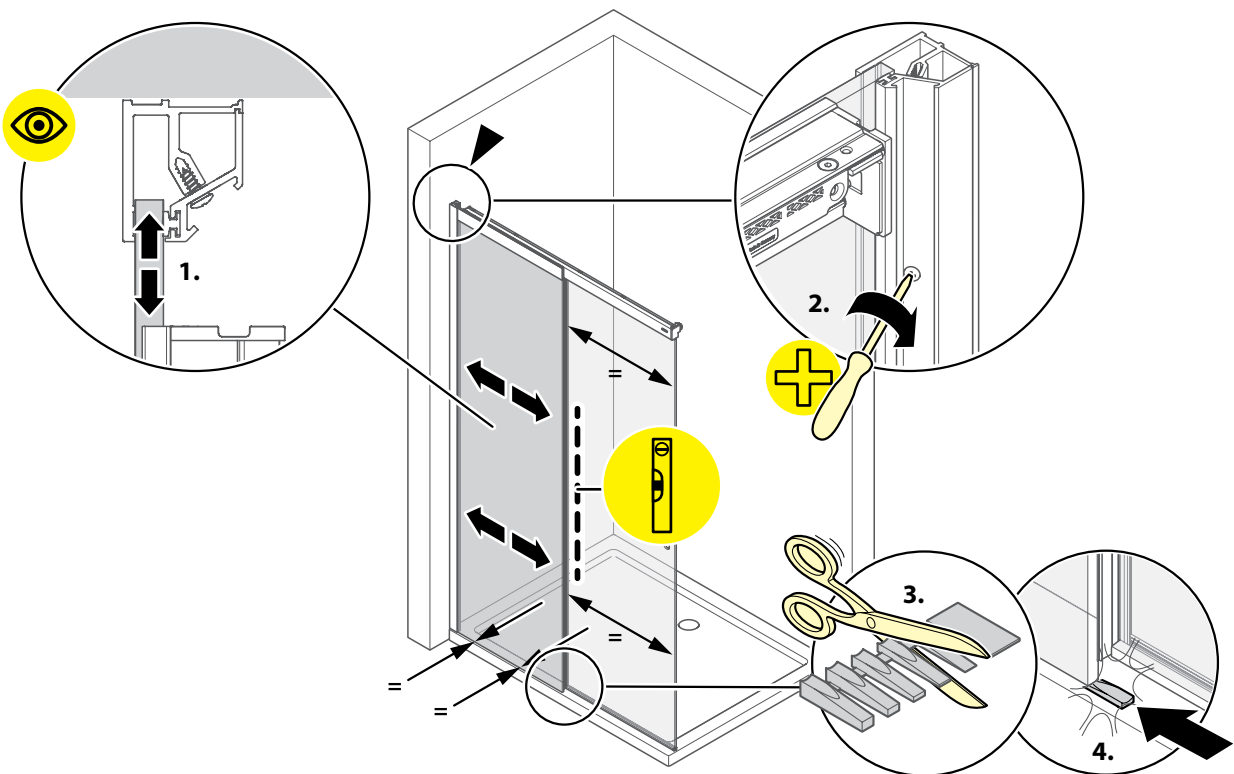
6



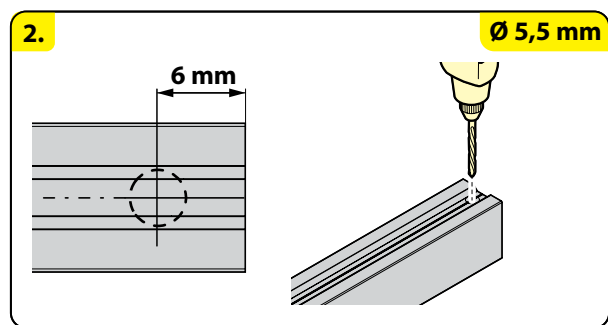
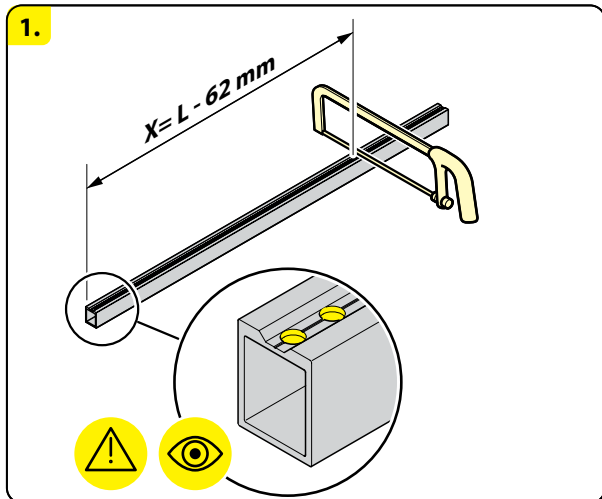
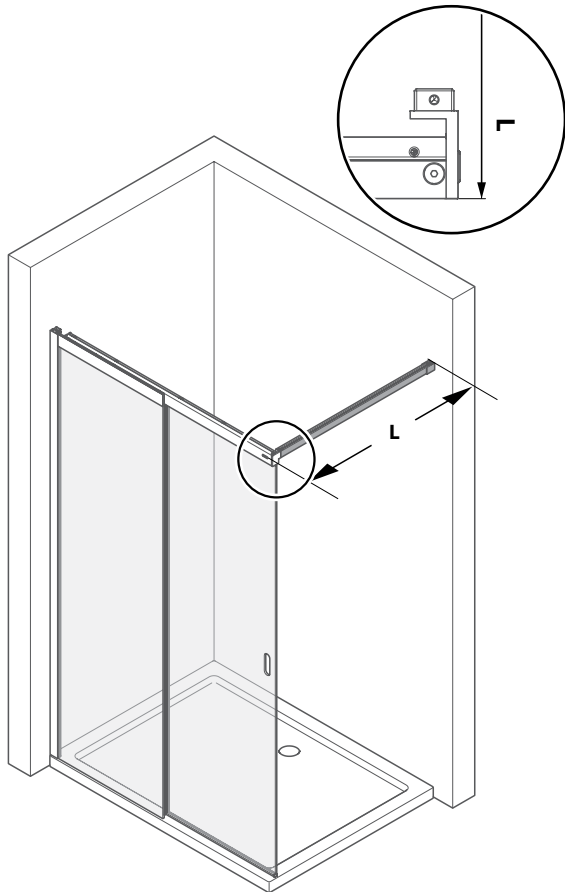
7



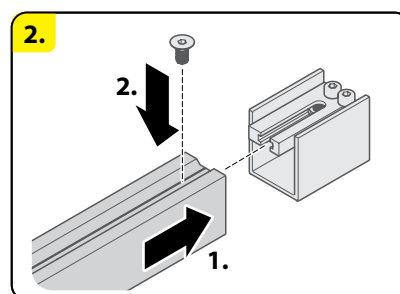
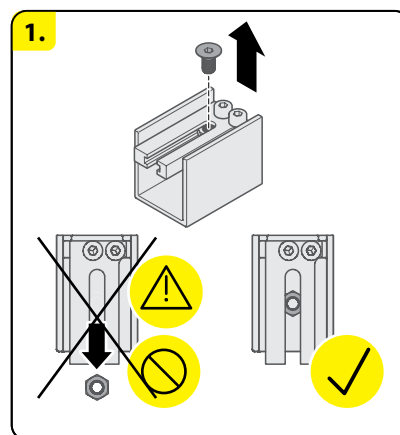
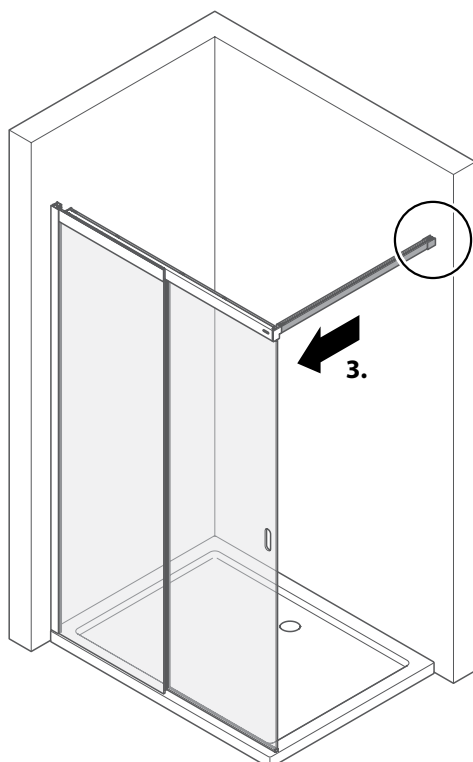
8



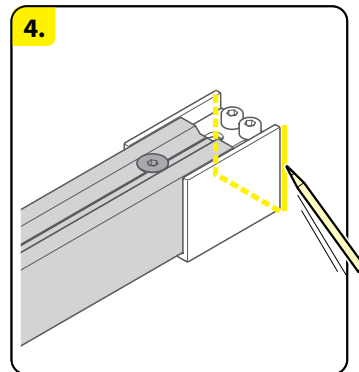
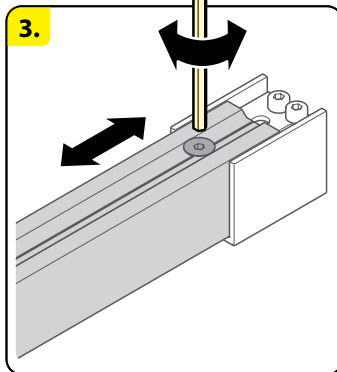
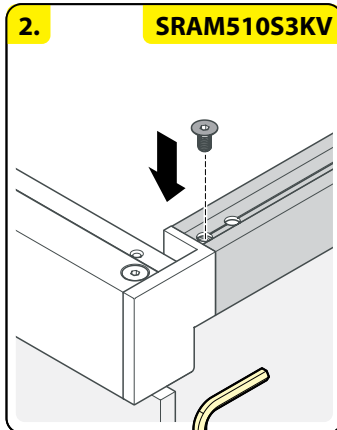
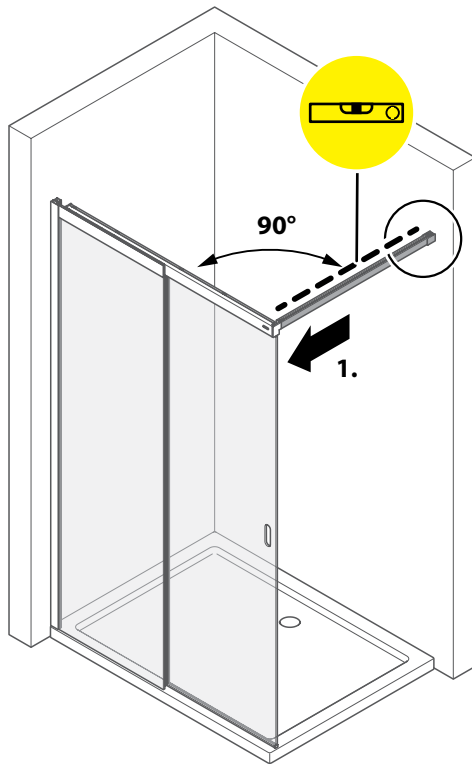
9



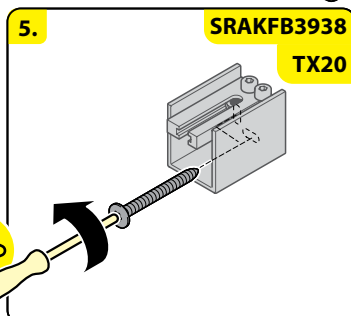
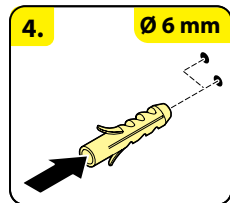
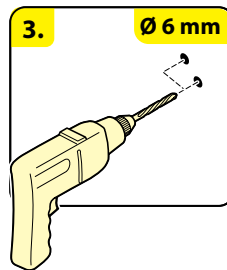
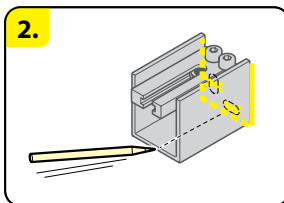
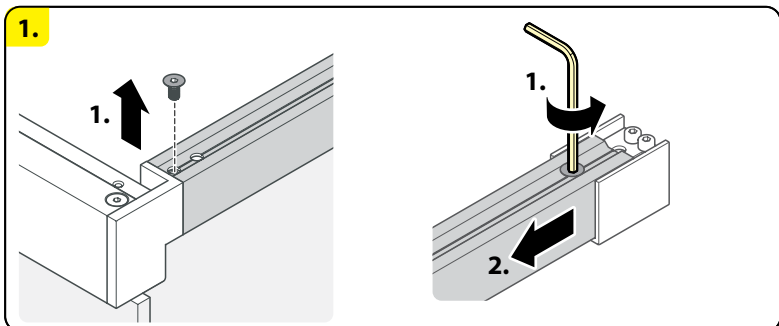
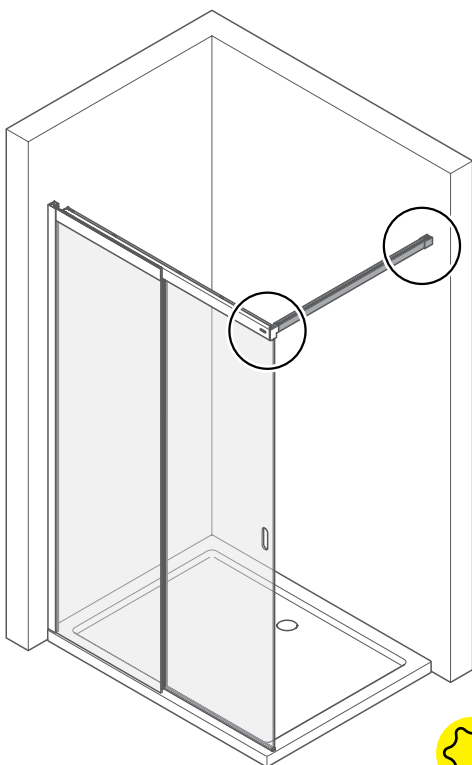
10



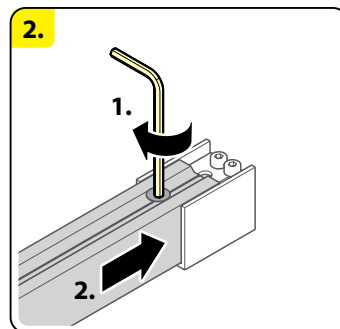
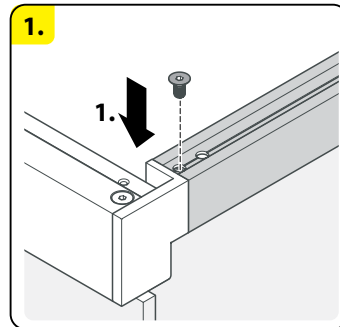
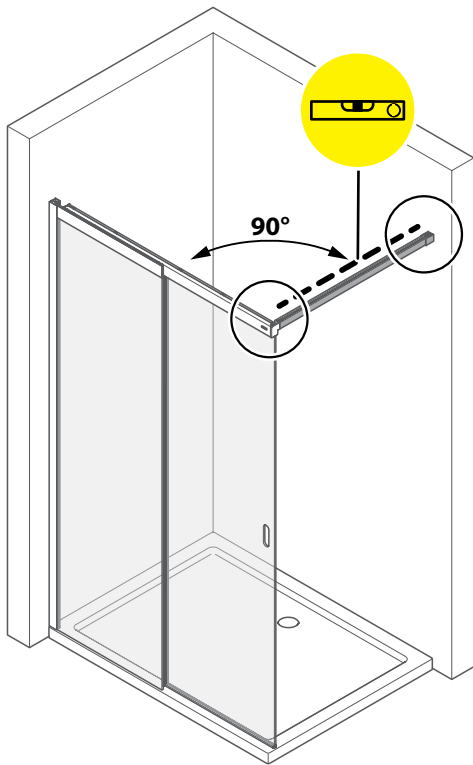
11



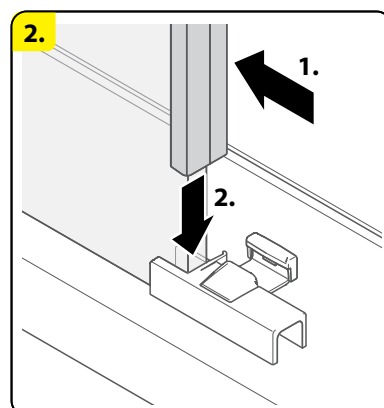
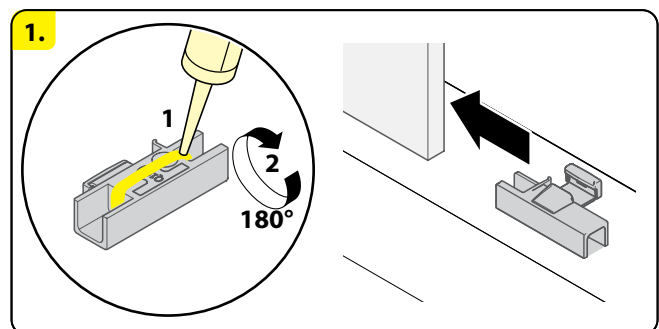
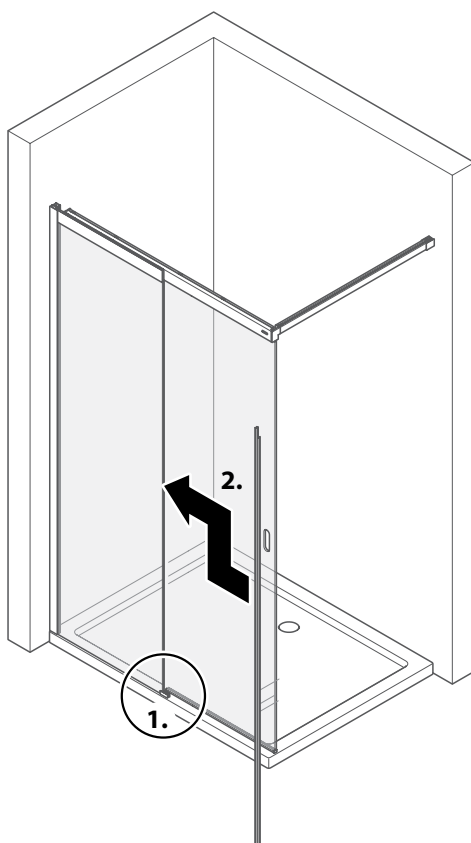
12



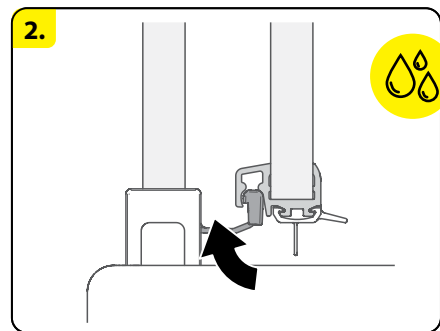
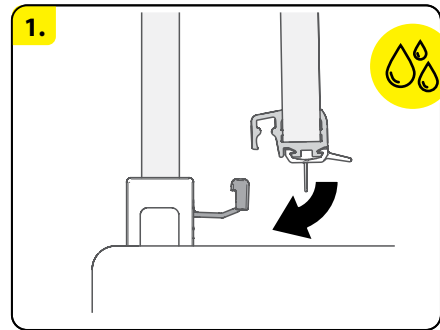
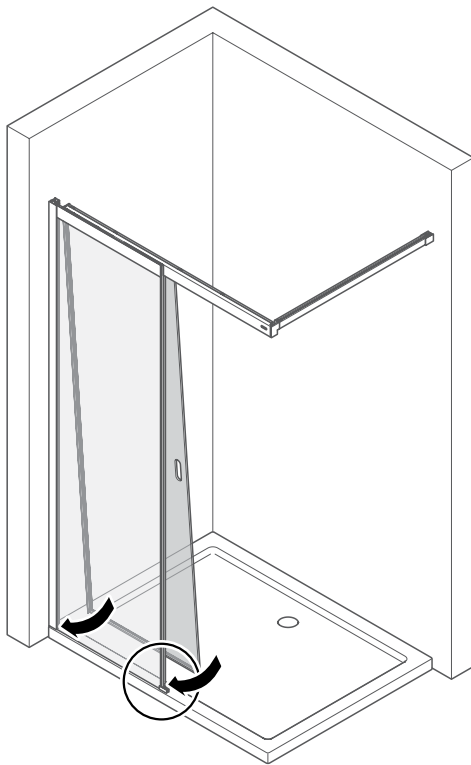
13



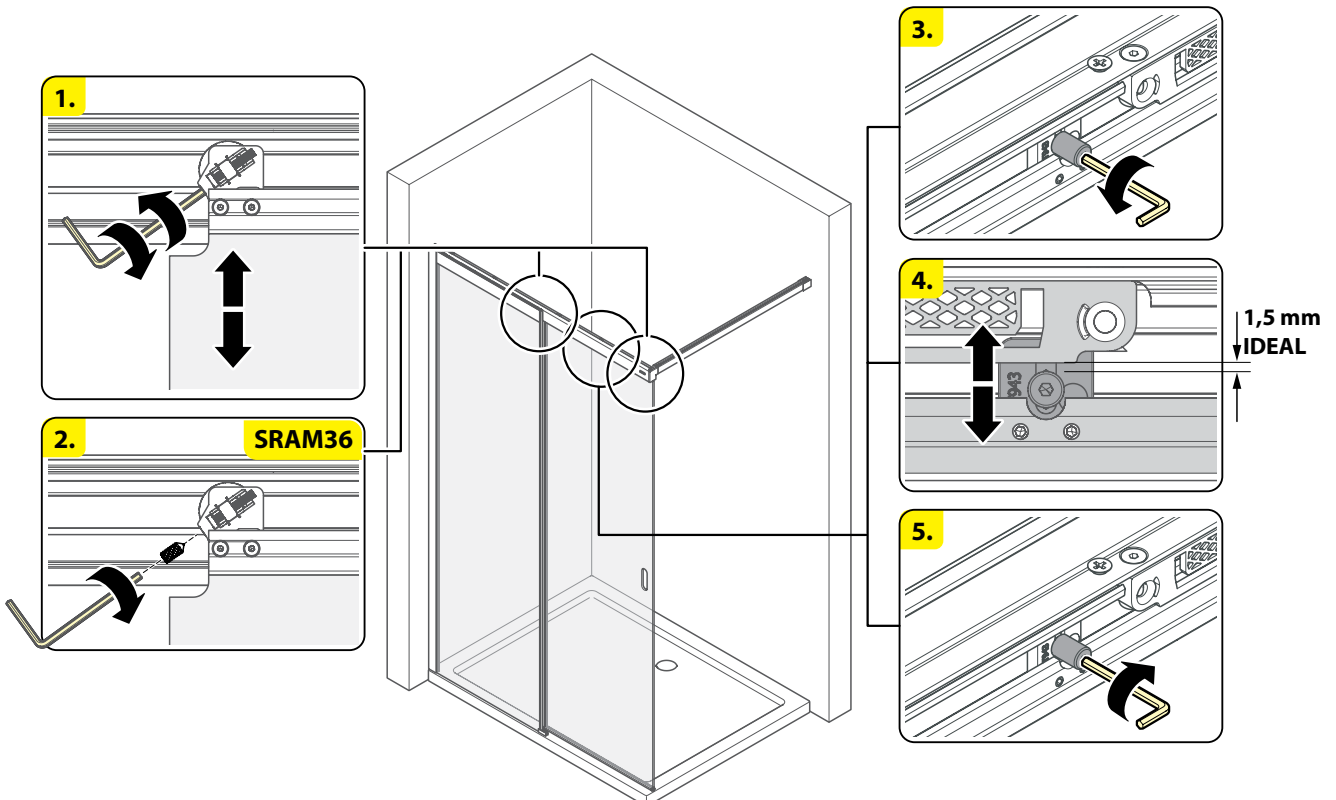
14



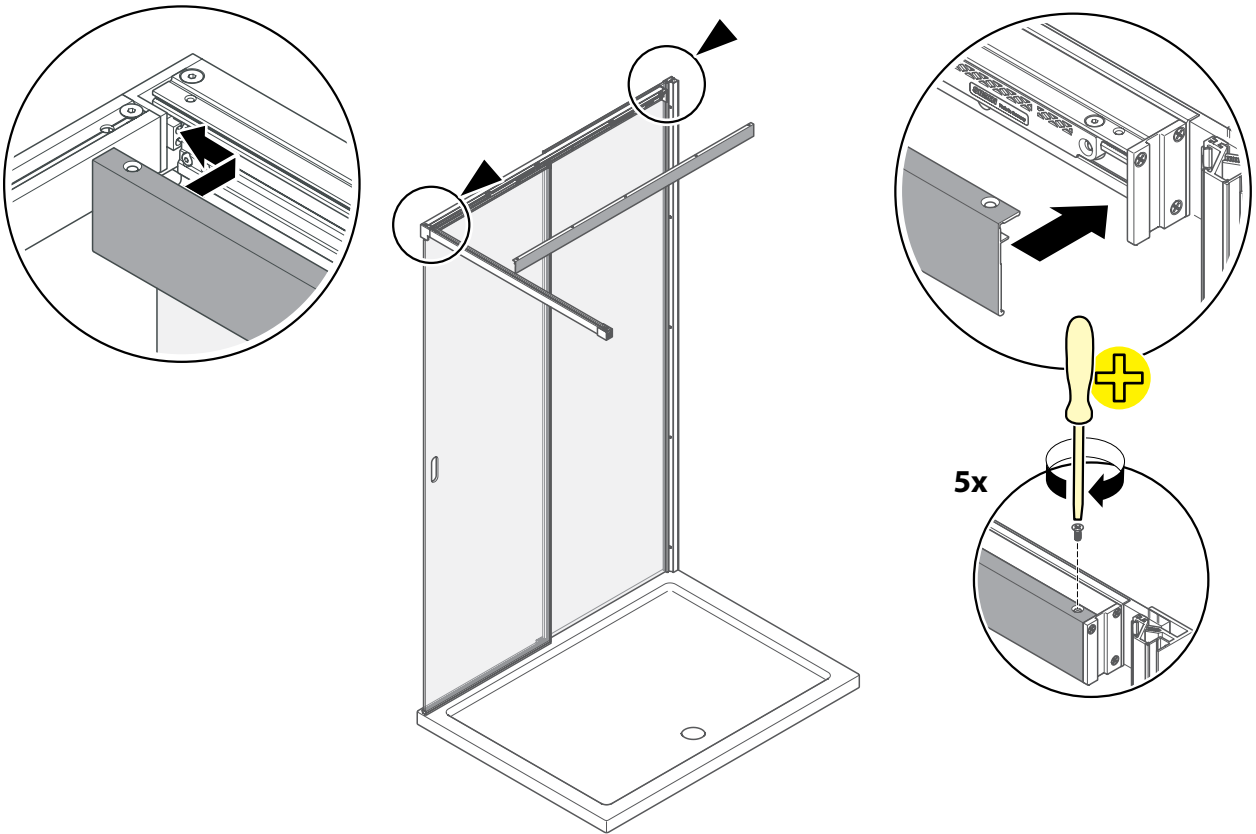
15



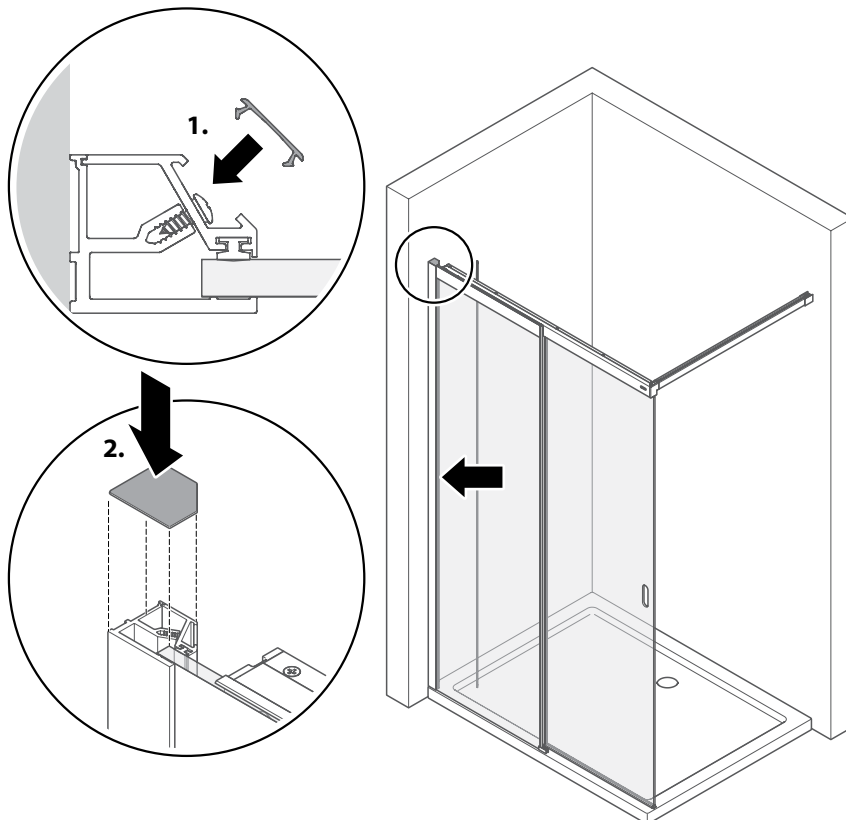
16



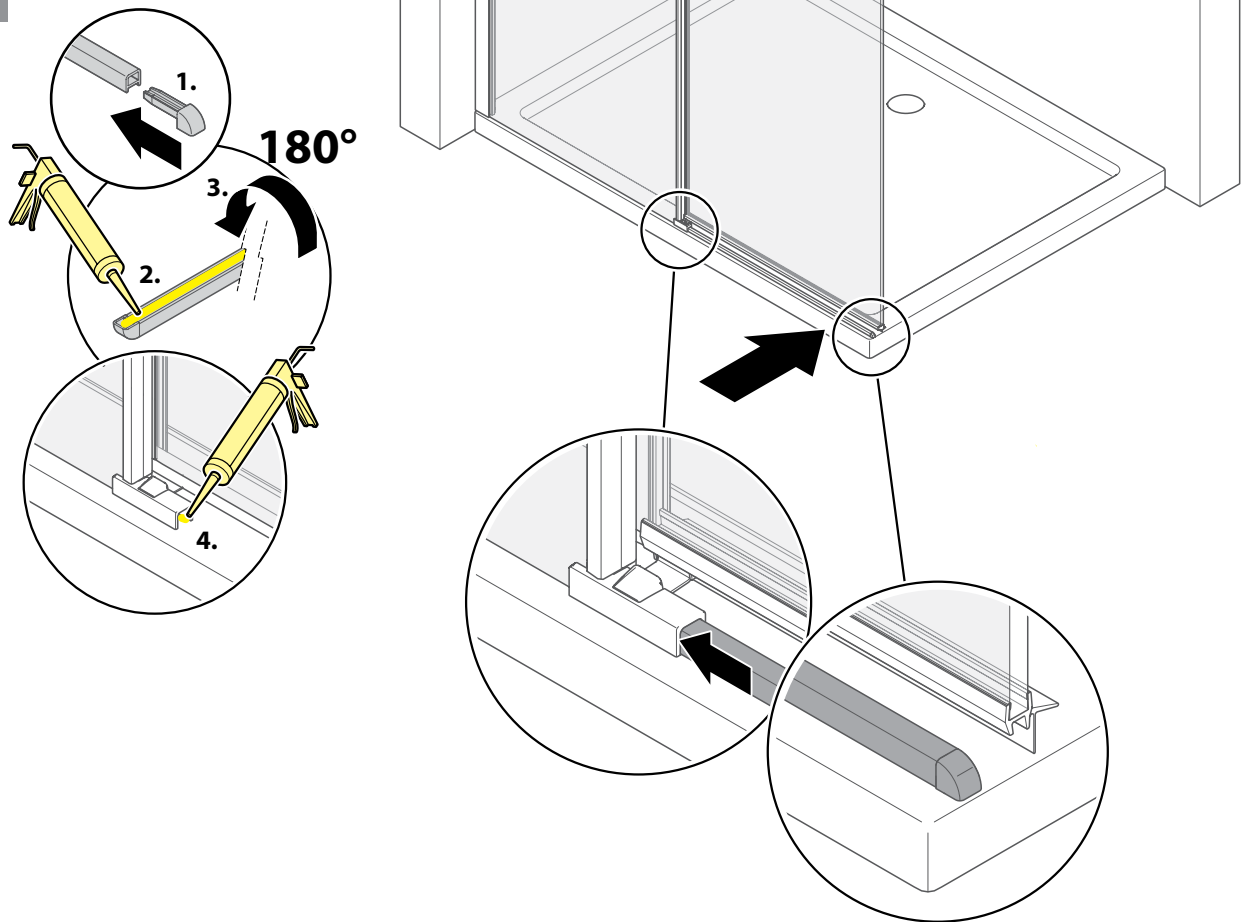
17



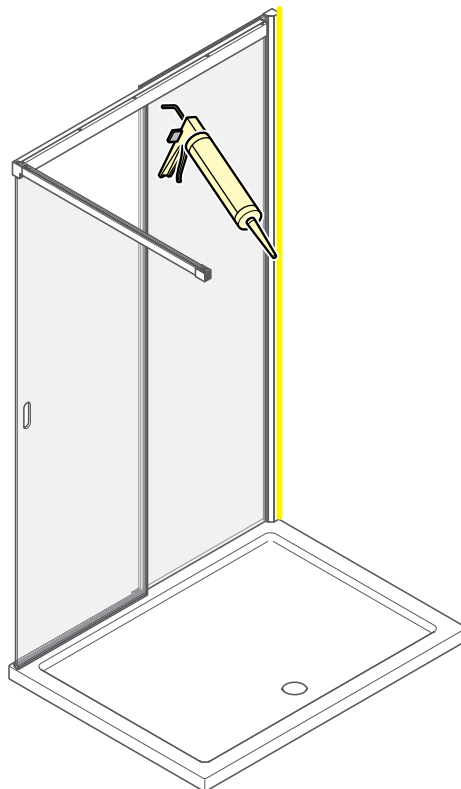
18

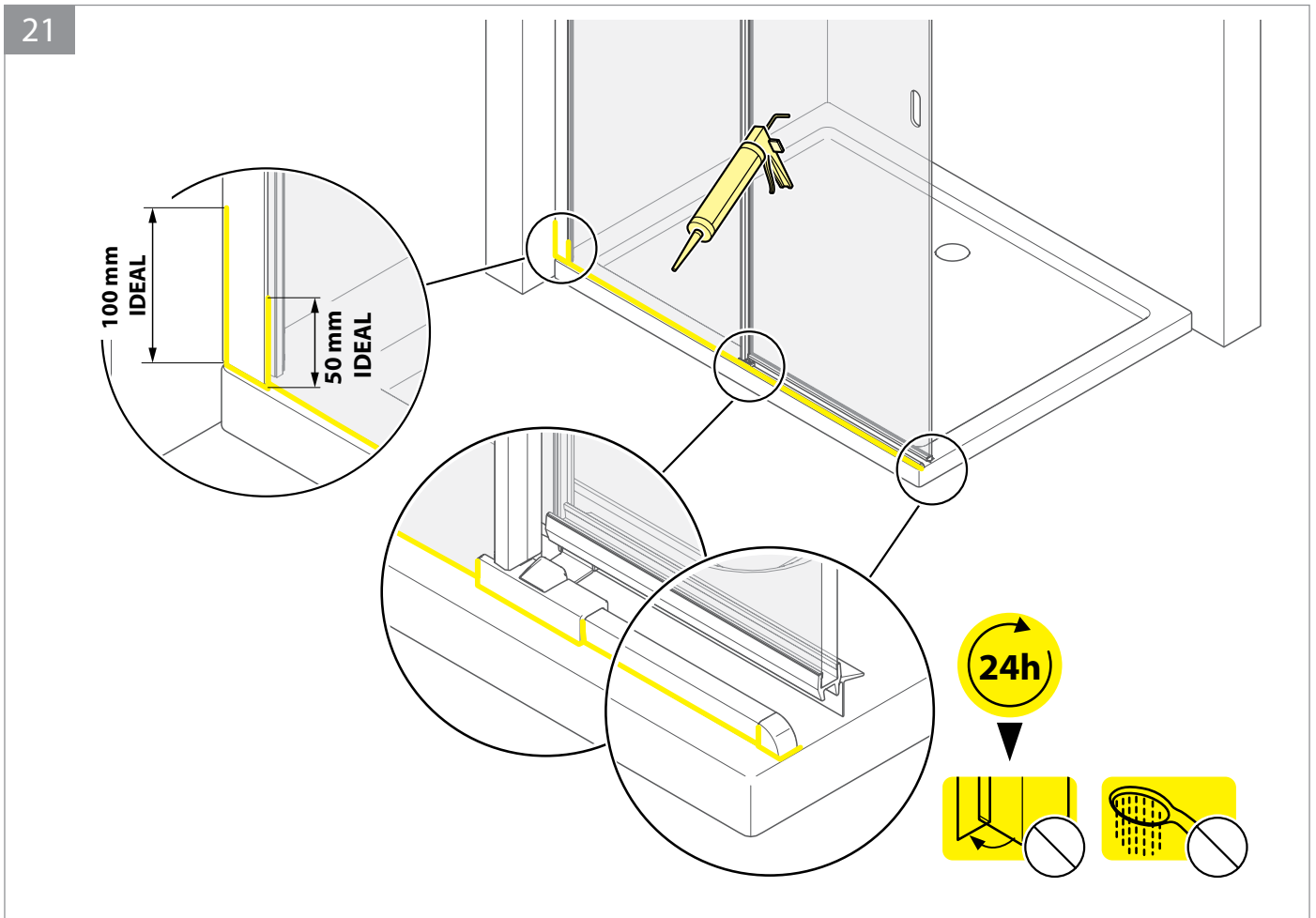


19



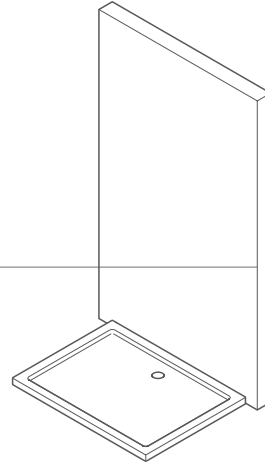
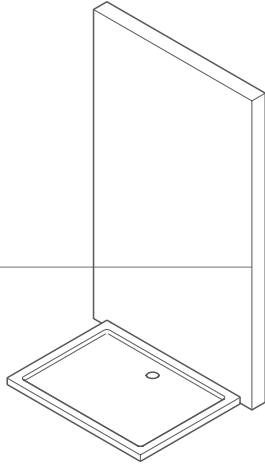
20





Der Artikel V5WG_L/R + V5GFS_L/R ist zwar speziell für die Montage auf Duschwannen ausgelegt. Sollten Sie ihn dennoch für eine Bodenmontage "Glasmittle" einsetzen wollen, so finden Sie hierzu mit der Bezeichnung EBG die Maßangaben für diesen Fall.

16



Wanne, Einbaumas Wanne (EBW)

V5WG	1000	1100	1200	1300	
EBW	983-1008	1083-1108	1183-1208	1283-1308	
ER	7	7	7	7	

V5WG	1400	1500	1600	1700	1800
EBW	1383-1408	1483-1508	1583-1608	1683-1708	1783-1808
ER	7	7	7	7	7

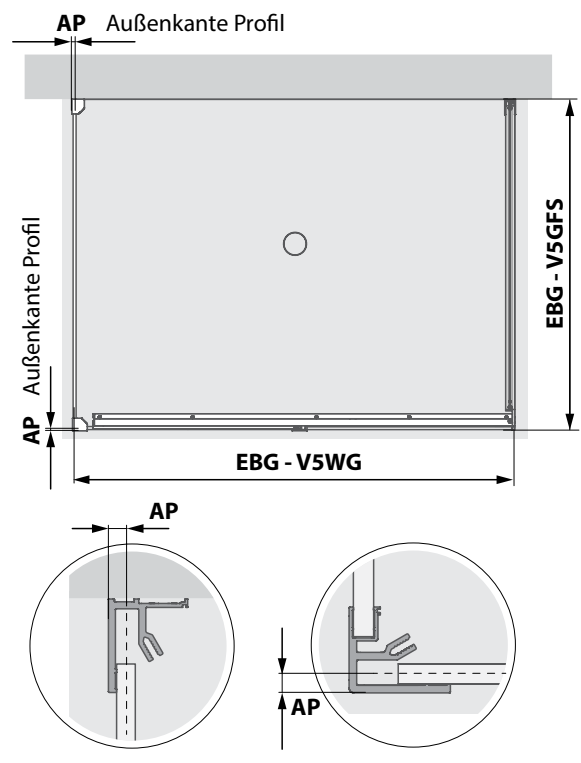
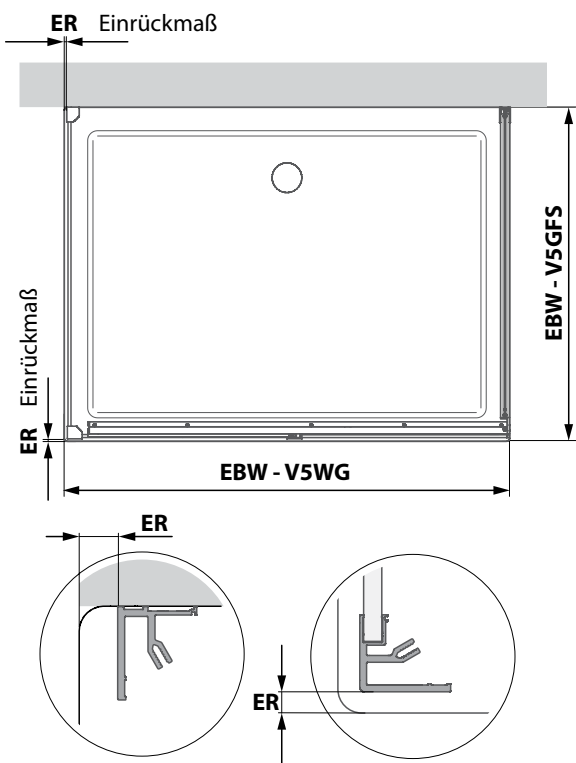
V5GFS	750	800	900	1000	1100	1200
EBW	726-751	776-801	876-901	976-1001	1076-1101	1176-1201
ER	7	7	7	7	7	7

Bodenmontage *Glasmittle* (EBG)

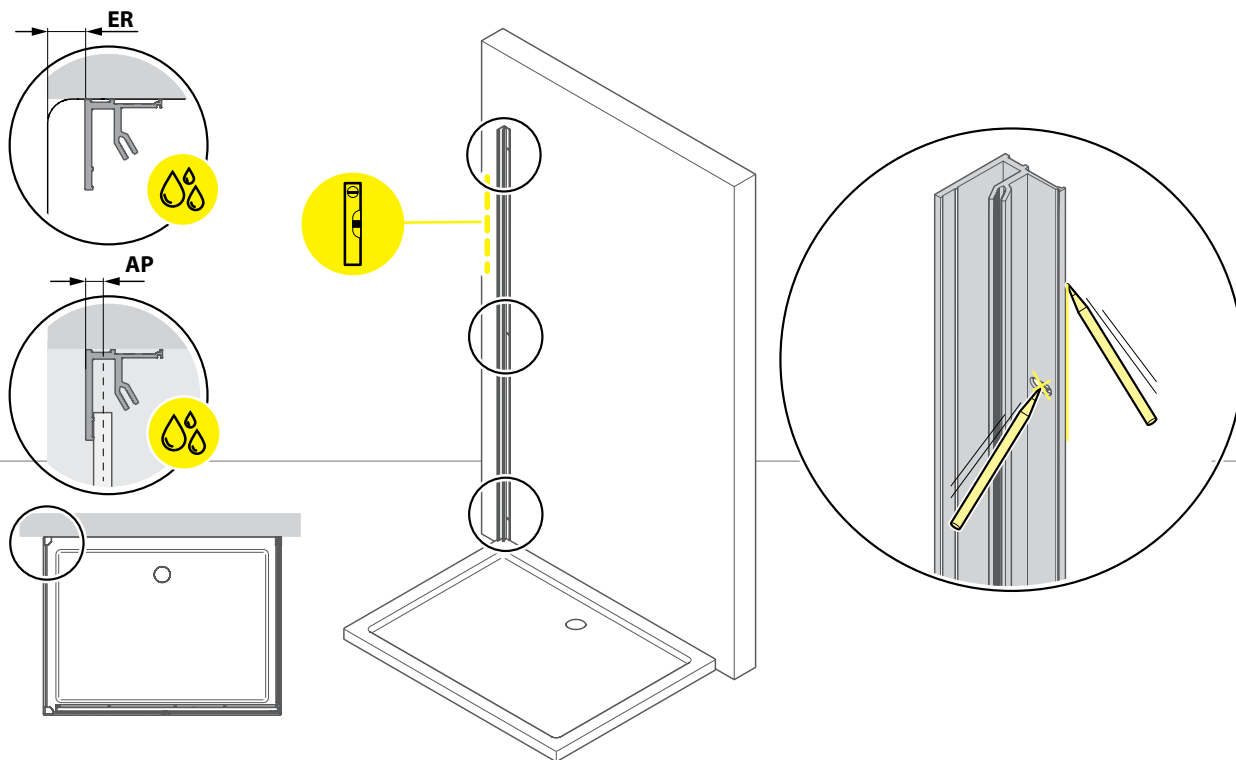
V5WG	1000	1100	1200	1300	
EBG	969-994	1069-1094	1169-1194	1269-1294	
AP	7,5	7,5	7,5	7,5	

V5WG	1400	1500	1600	1700	1800
EBG	1369-1394	1469-1494	1569-1594	1669-1694	1769-1794
AP	7,5	7,5	7,5	7,5	7,5

V5GFS	750	800	900	1000	1100	1200
EBG	711-736	761-786	861-886	961-986	1061-1086	1161-1186
ER	7,5	7,5	7,5	7,5	7,5	7,5

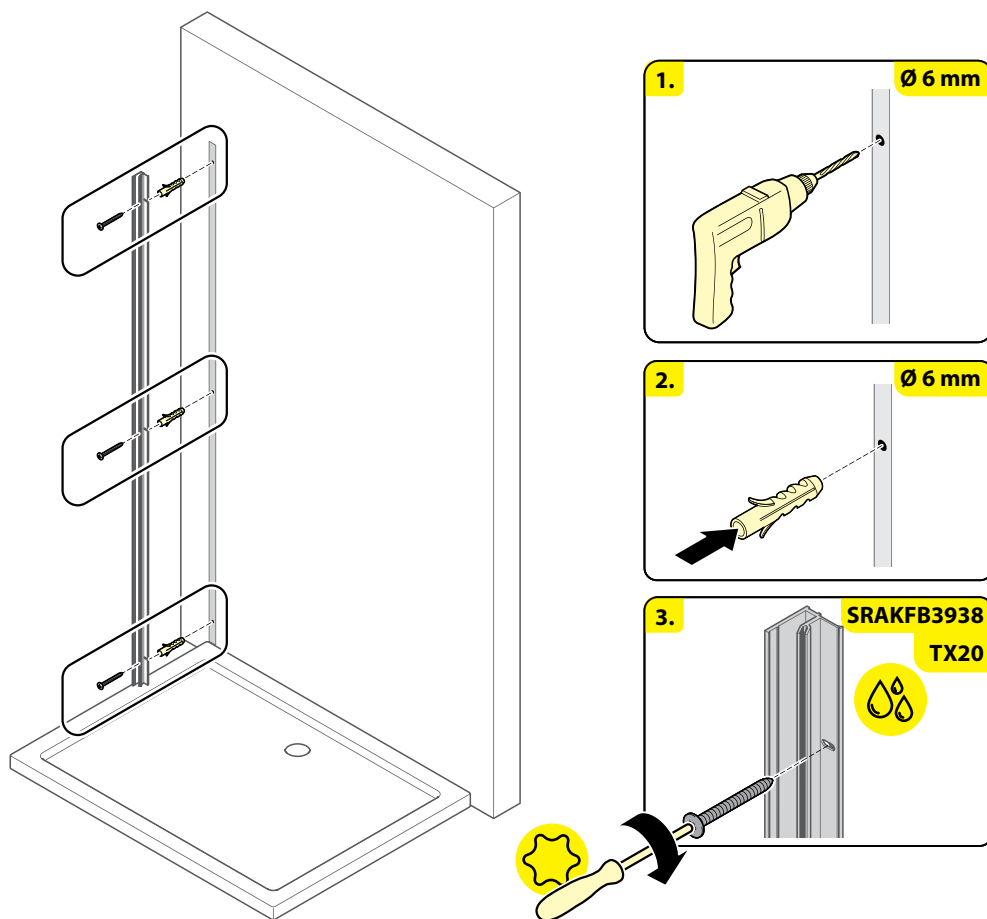


22

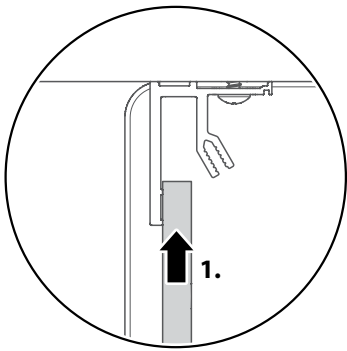


17

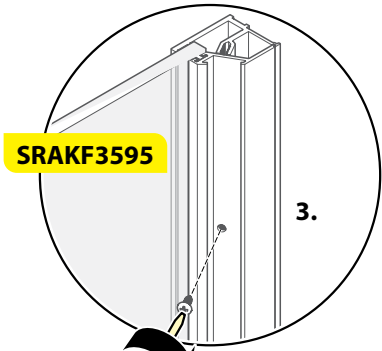
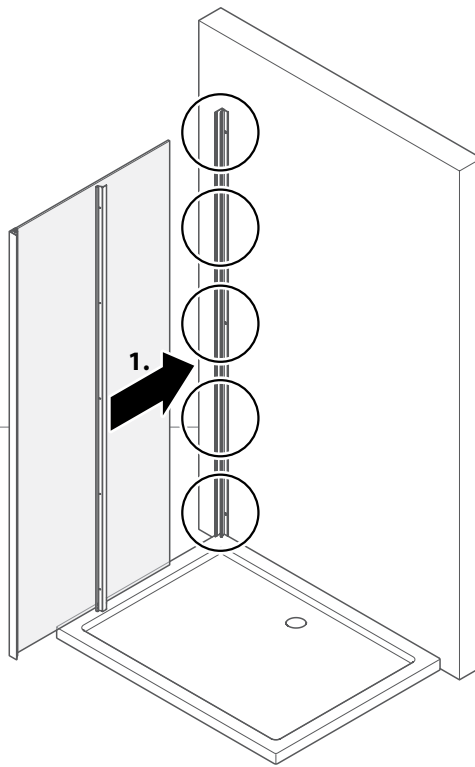
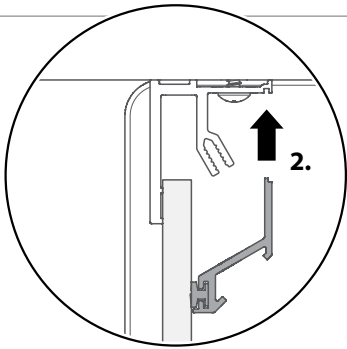
23



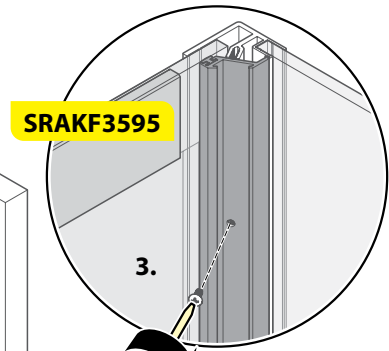
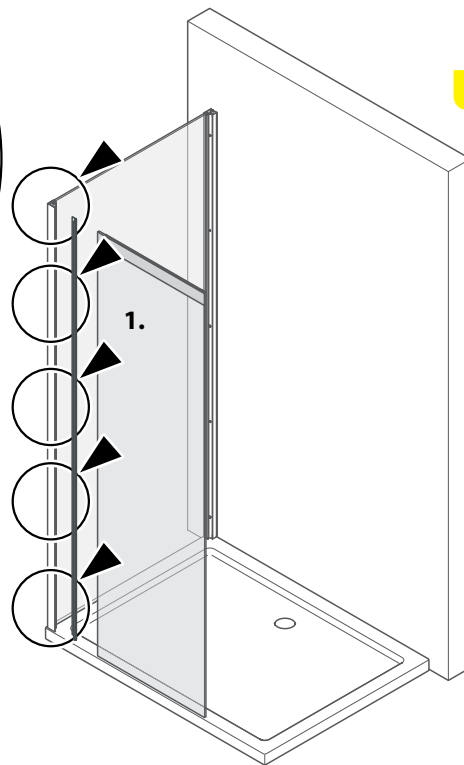
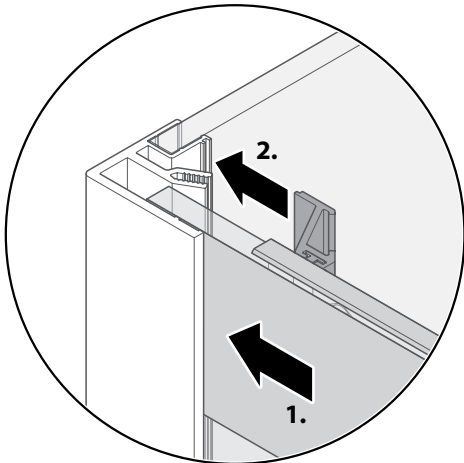
24



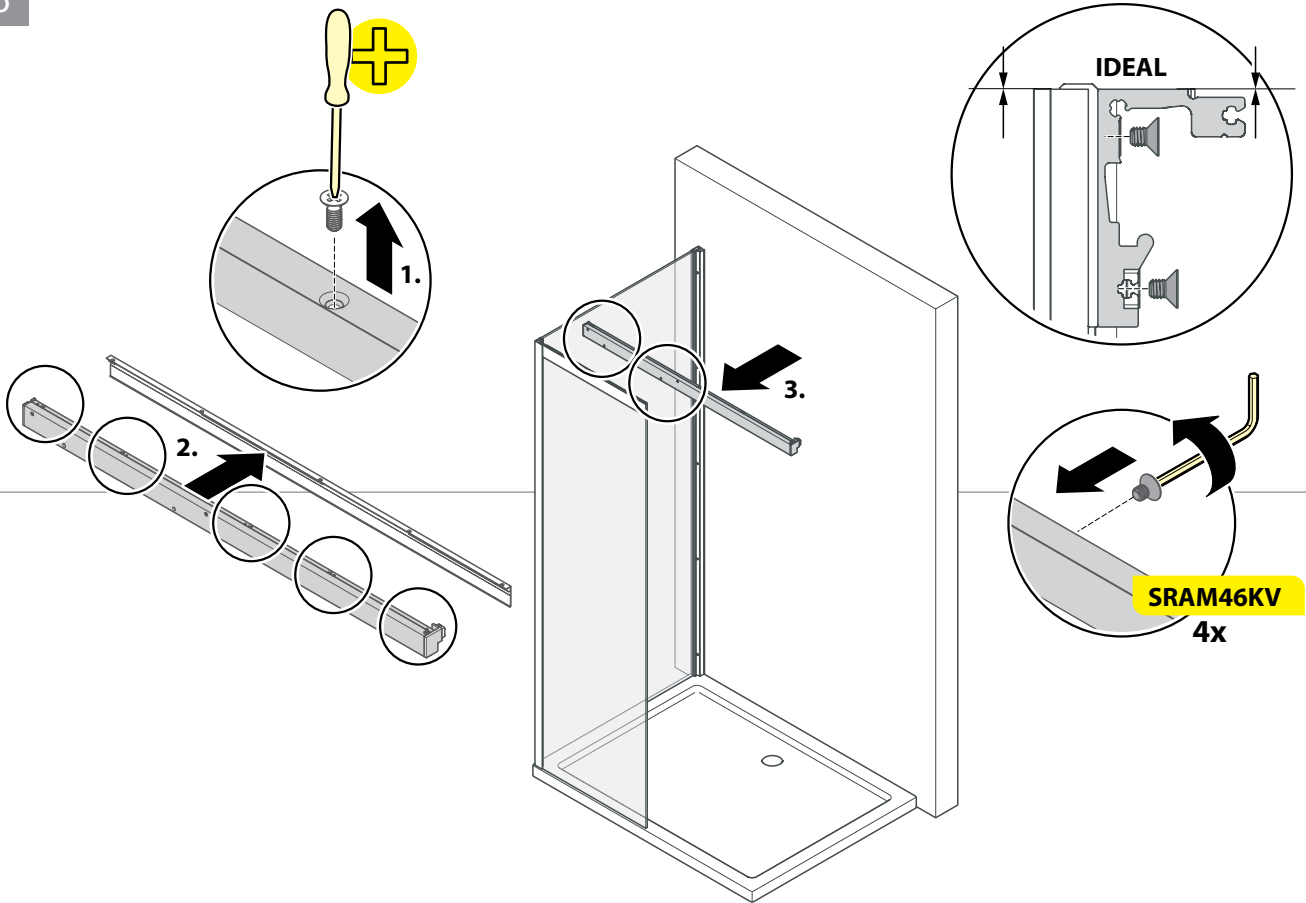
18



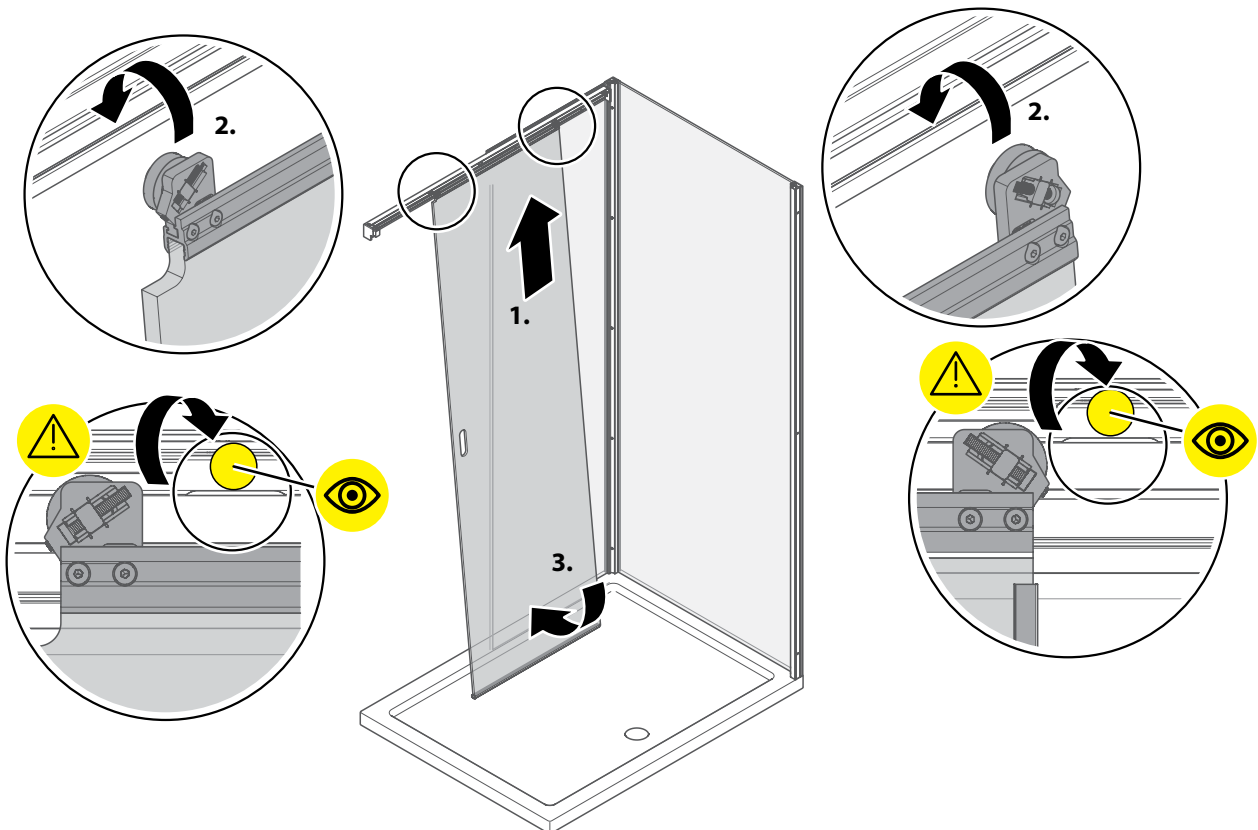
25



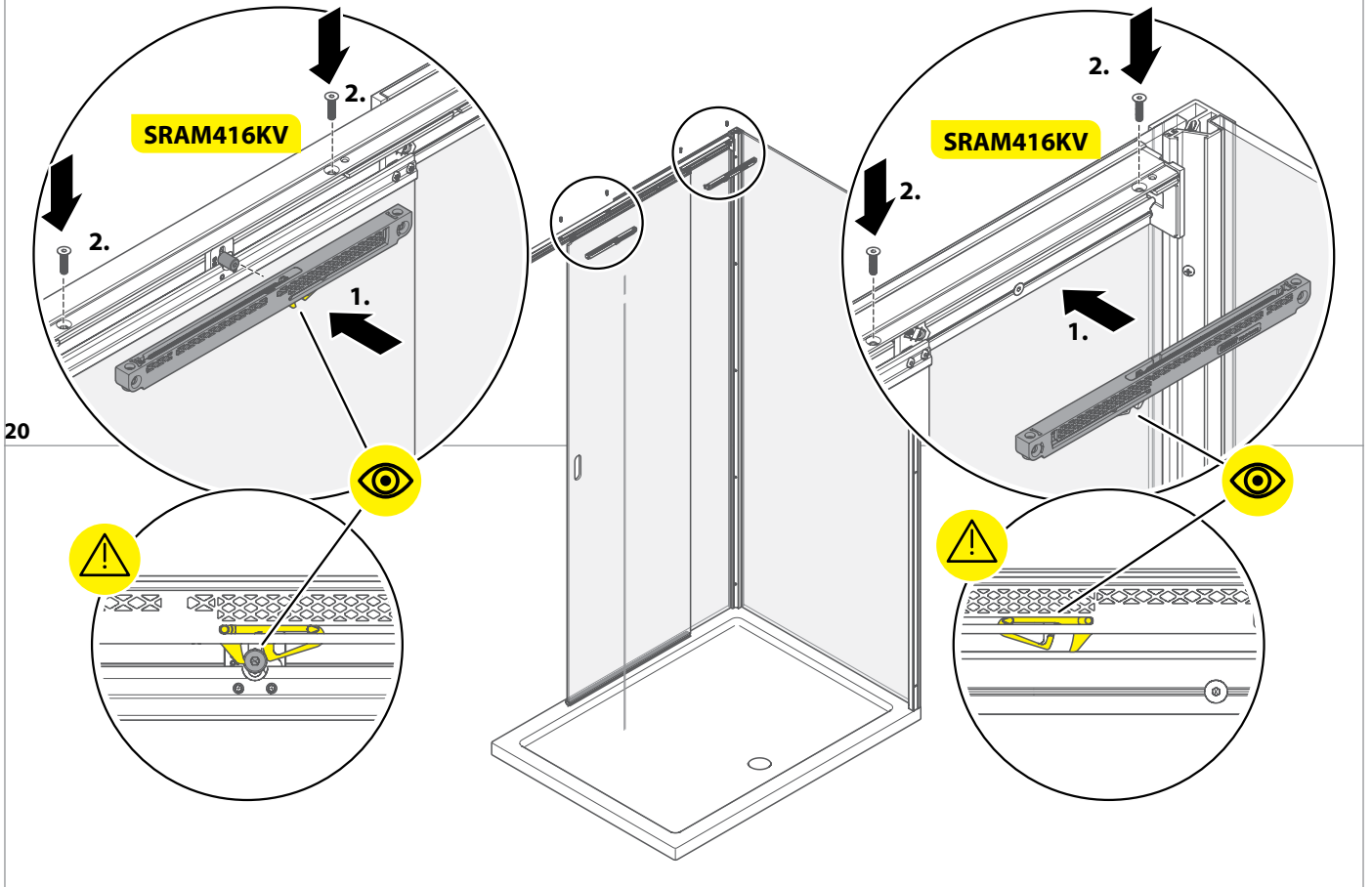
26



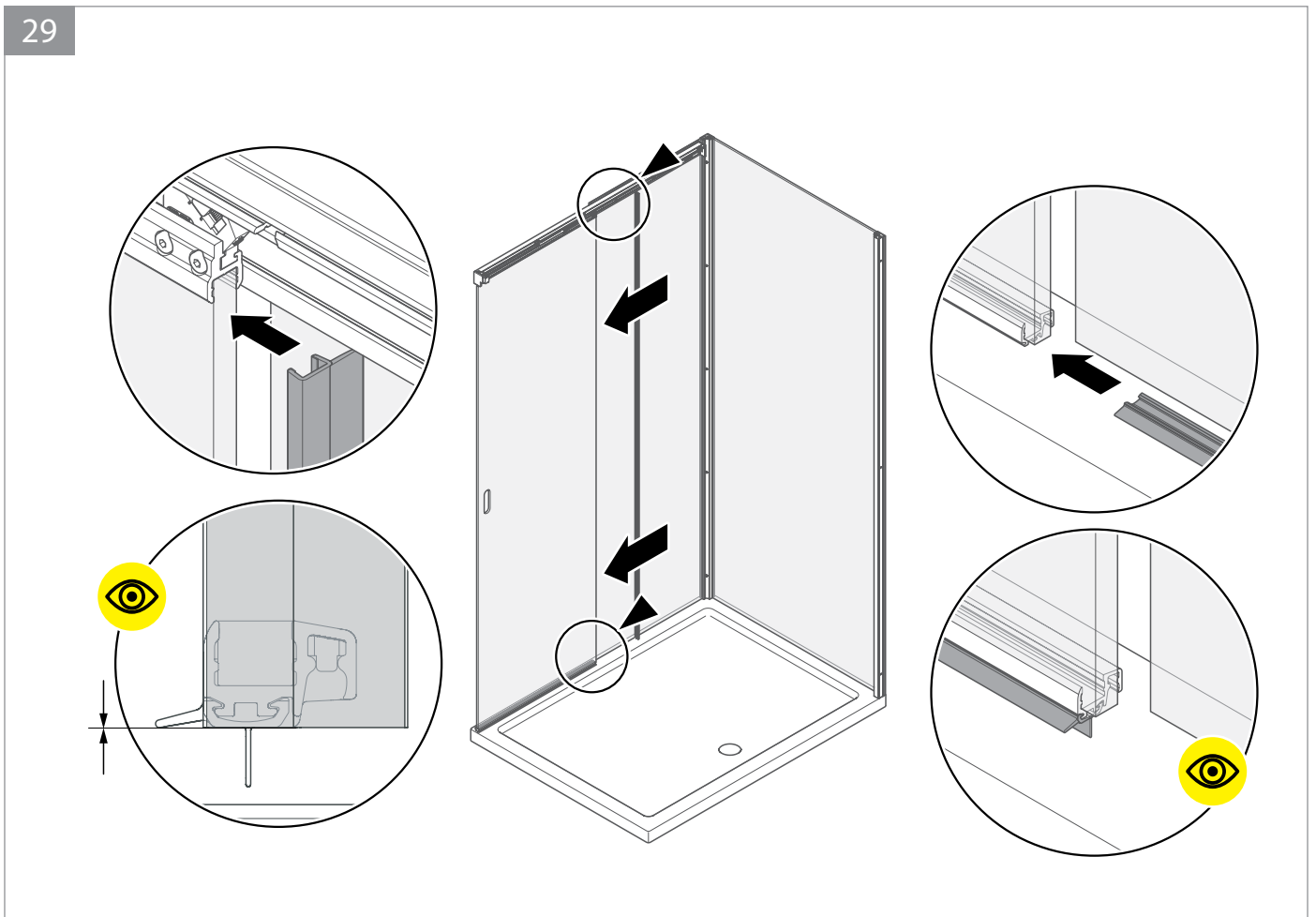
27



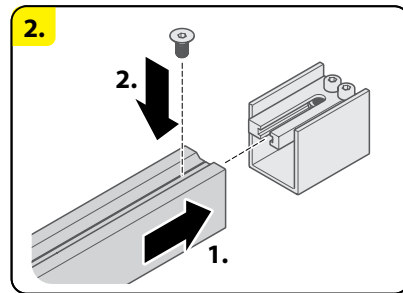
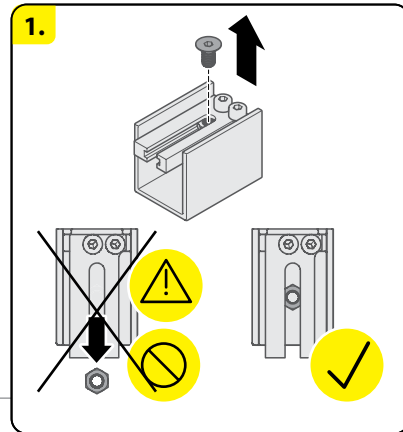
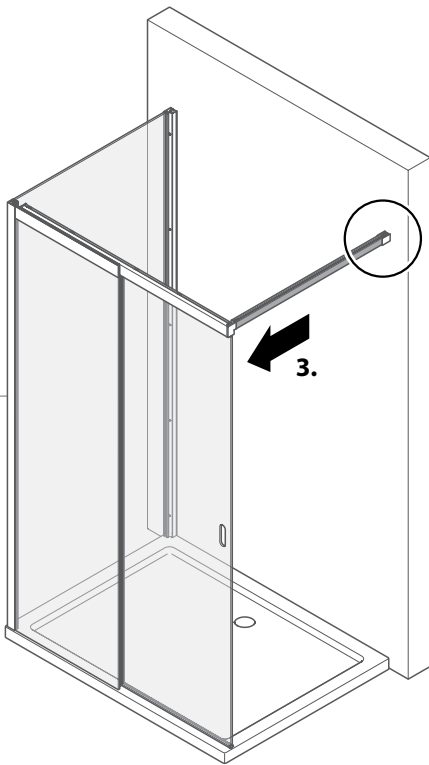
28



29

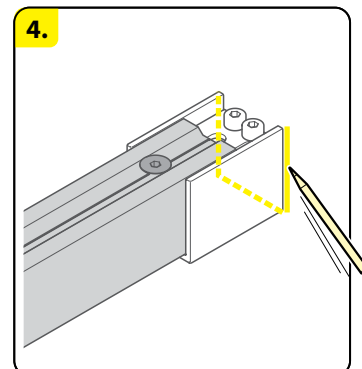
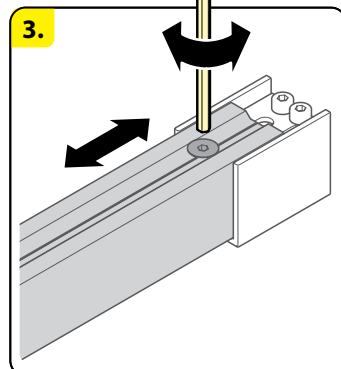
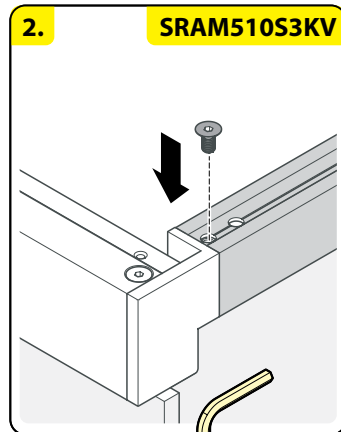
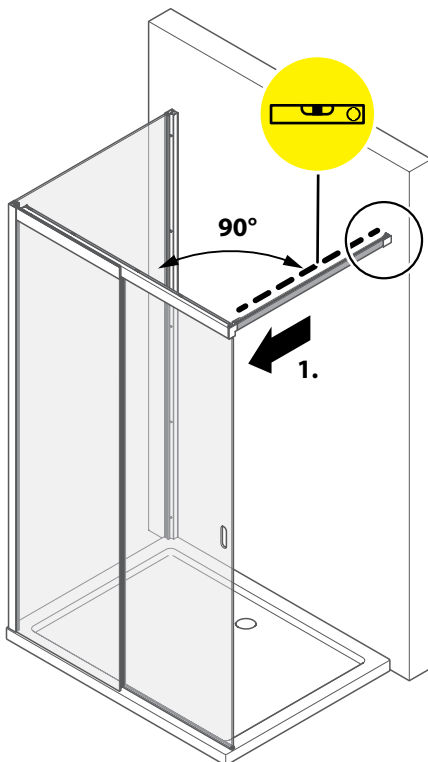


32

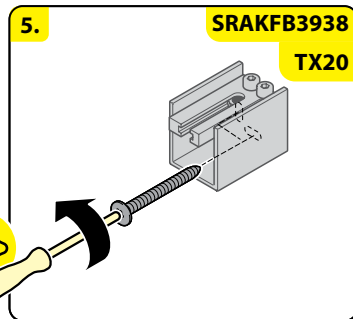
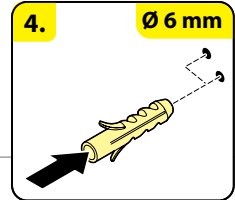
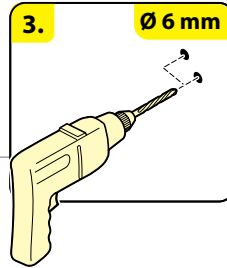
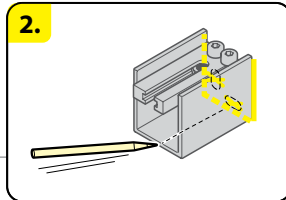
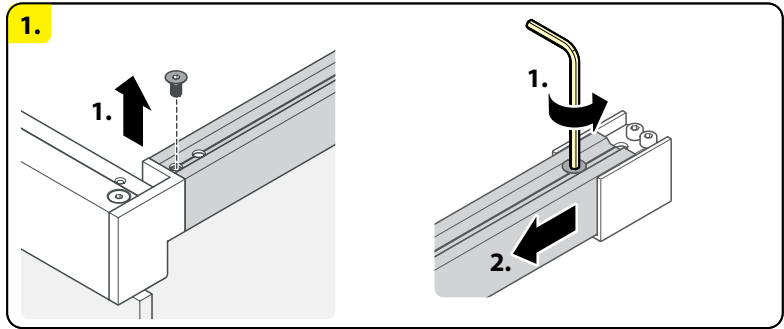
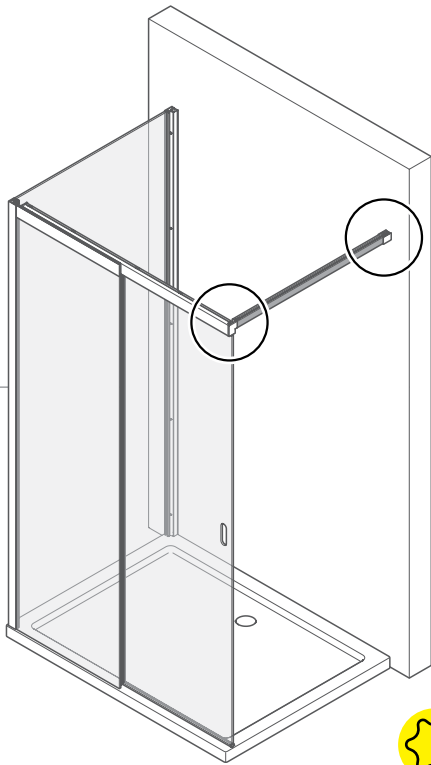


22

33

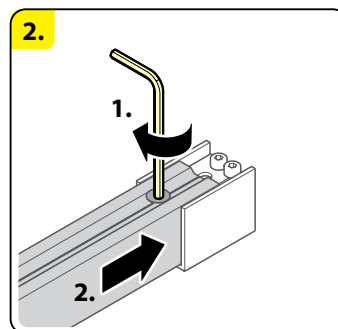
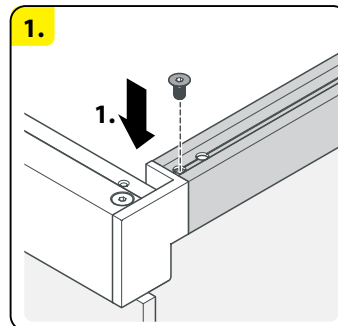
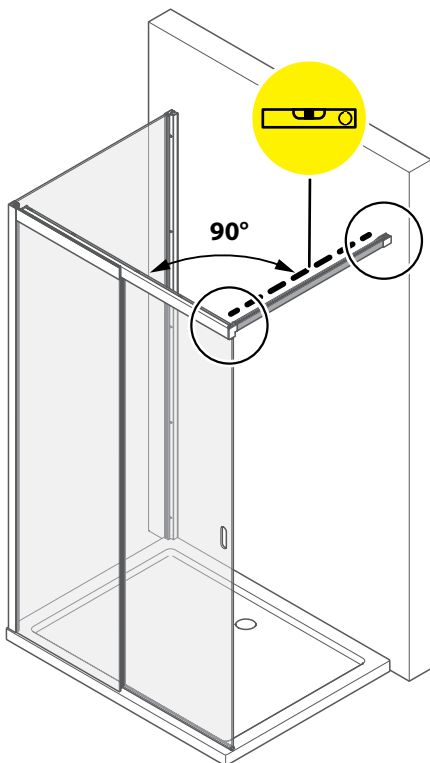


34

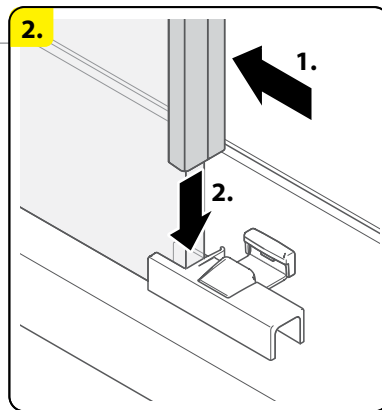
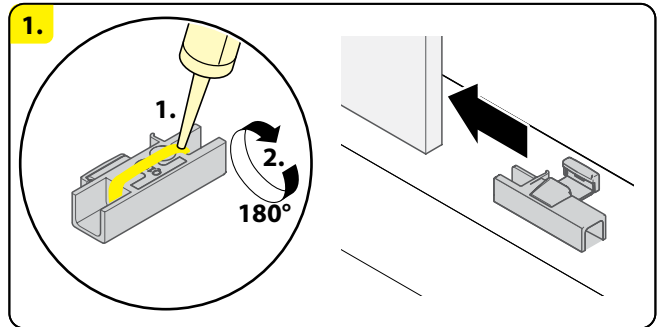
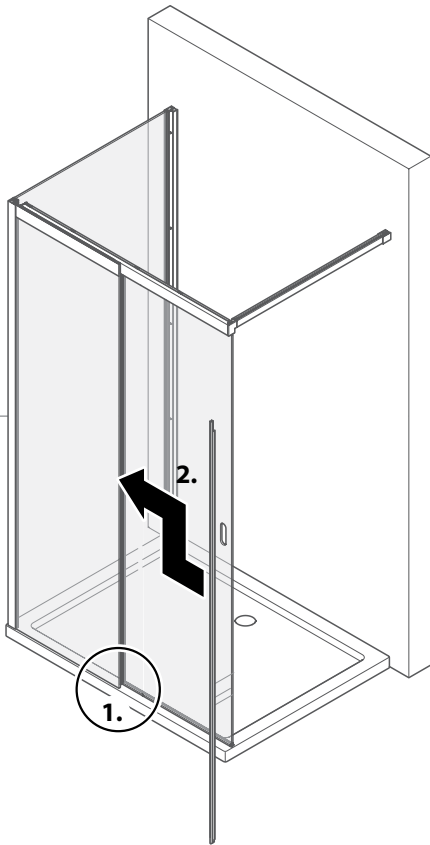


23

35

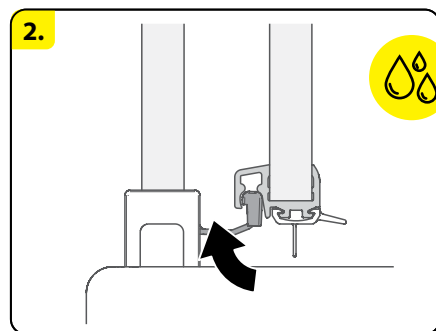
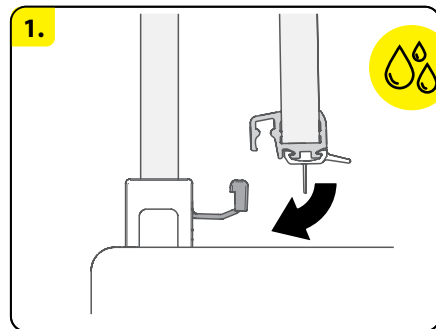
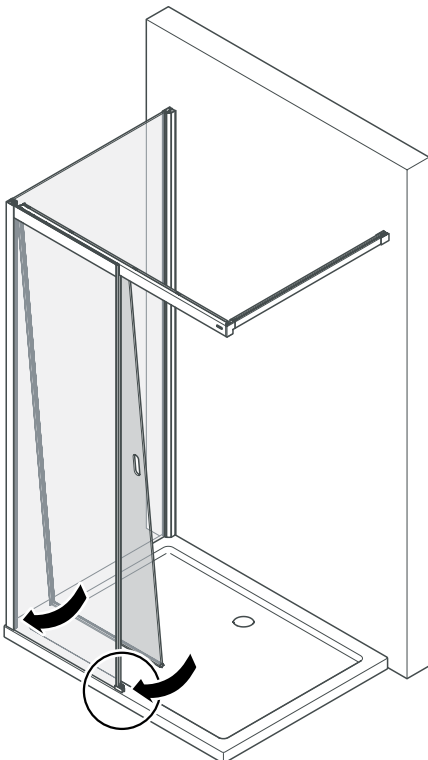


36

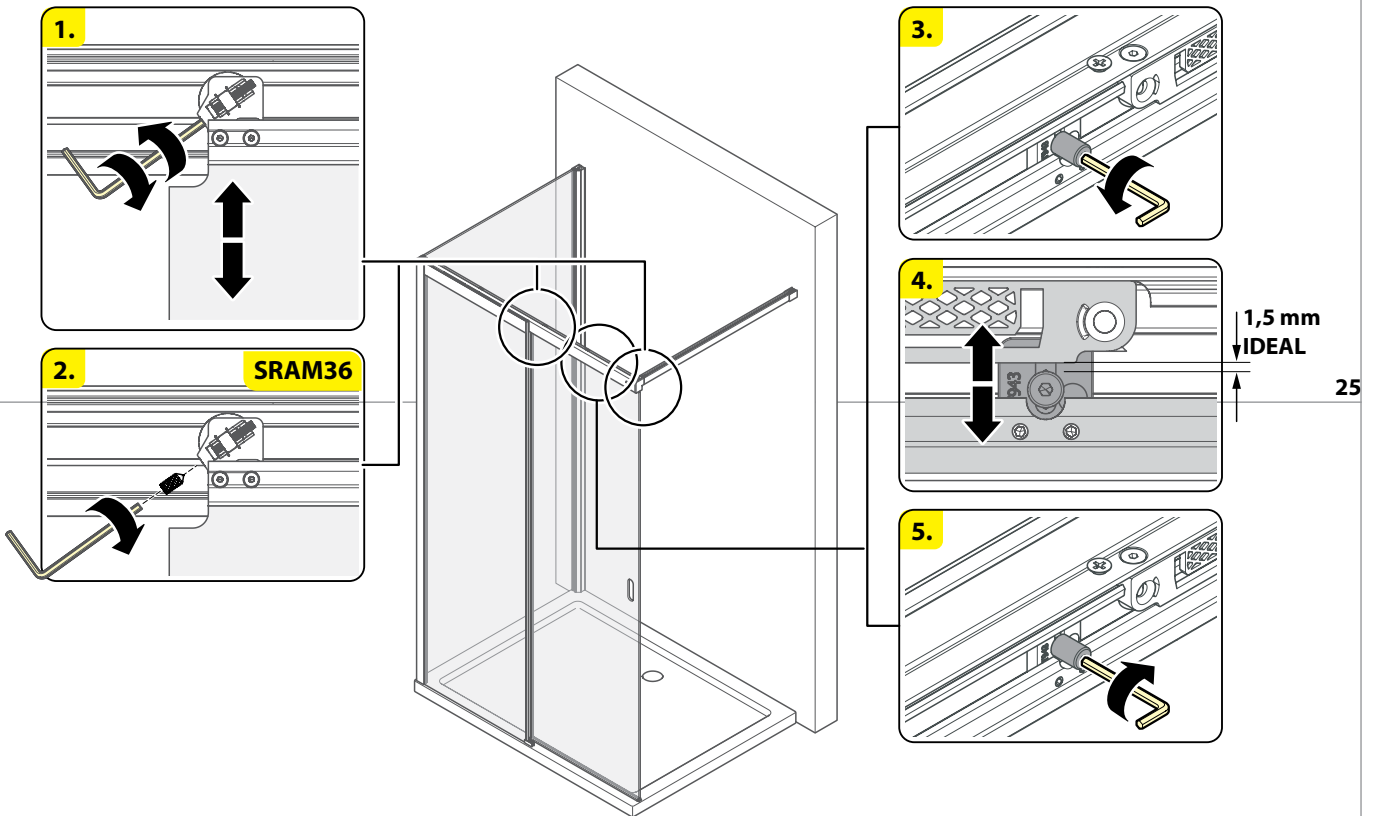


24

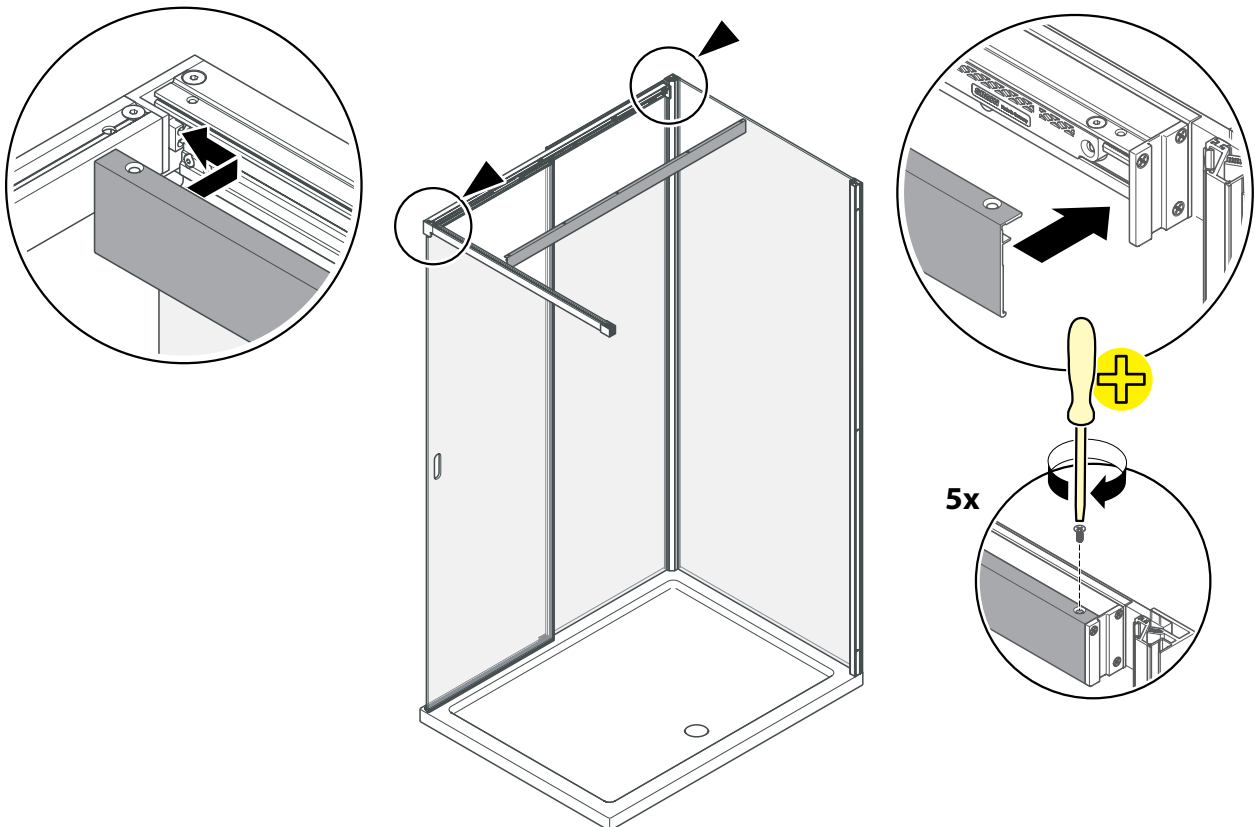
37



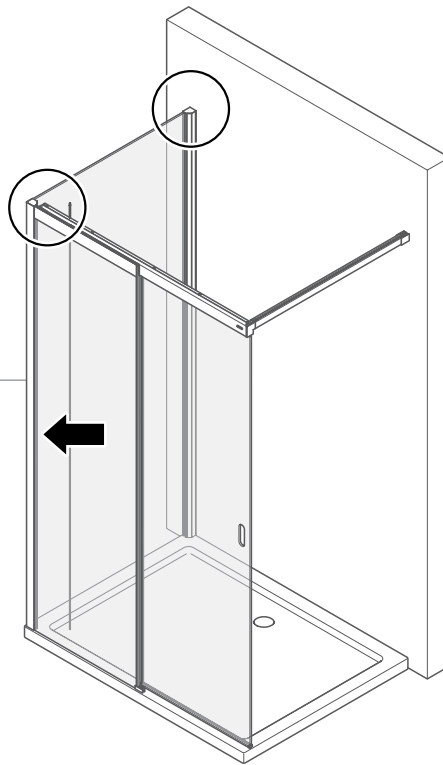
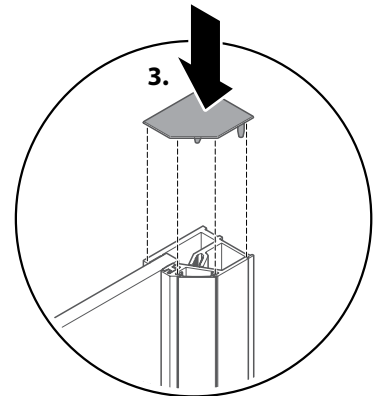
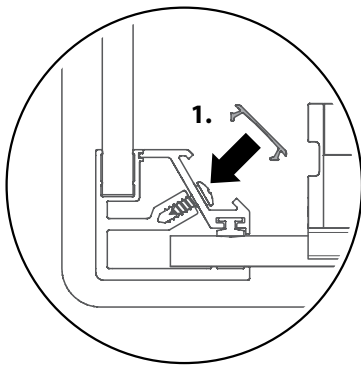
38



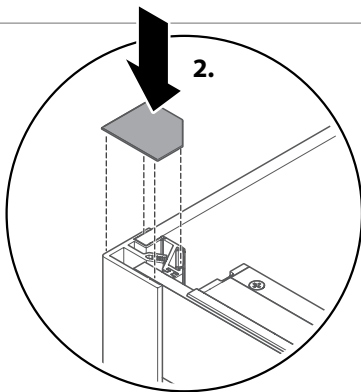
39



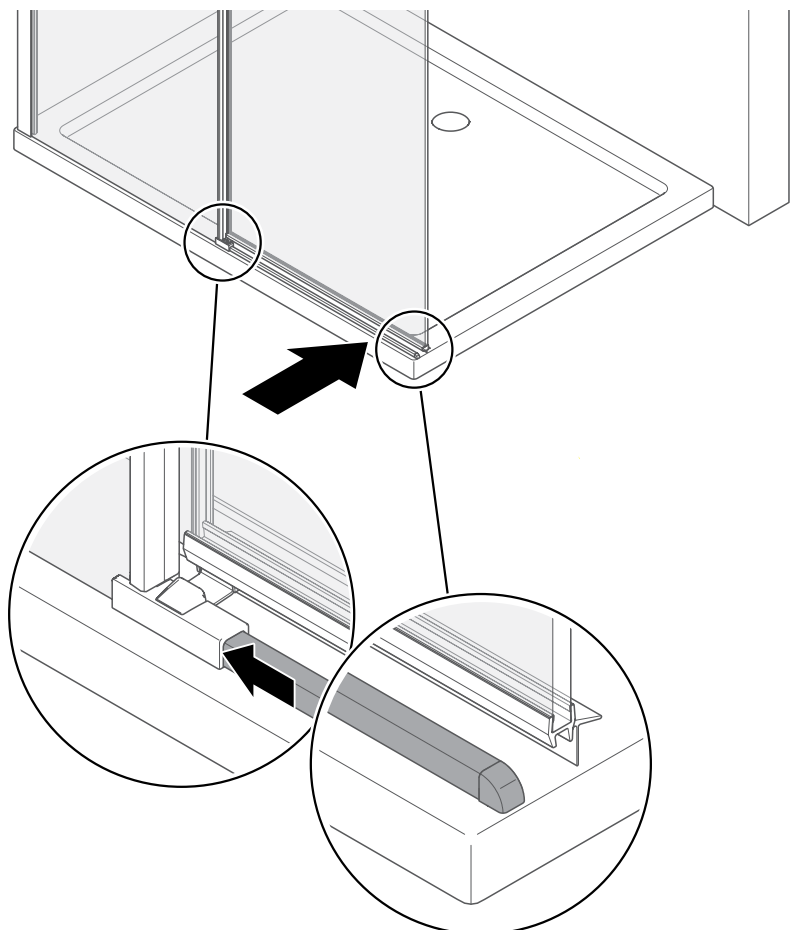
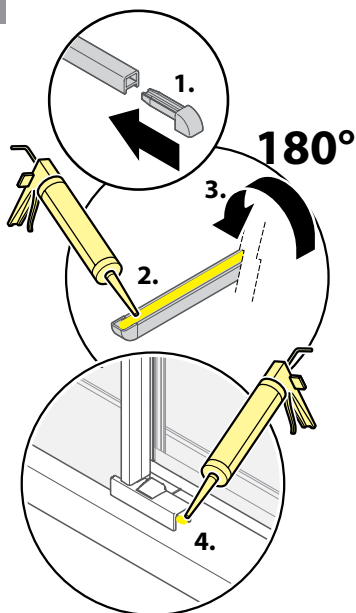
40



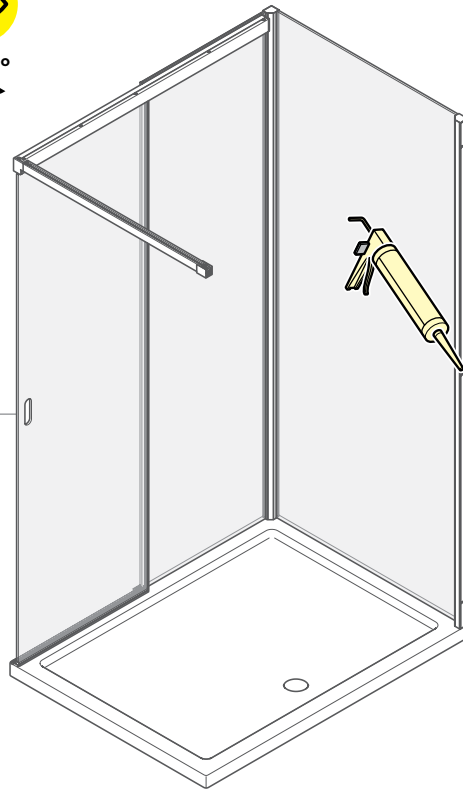
26



41

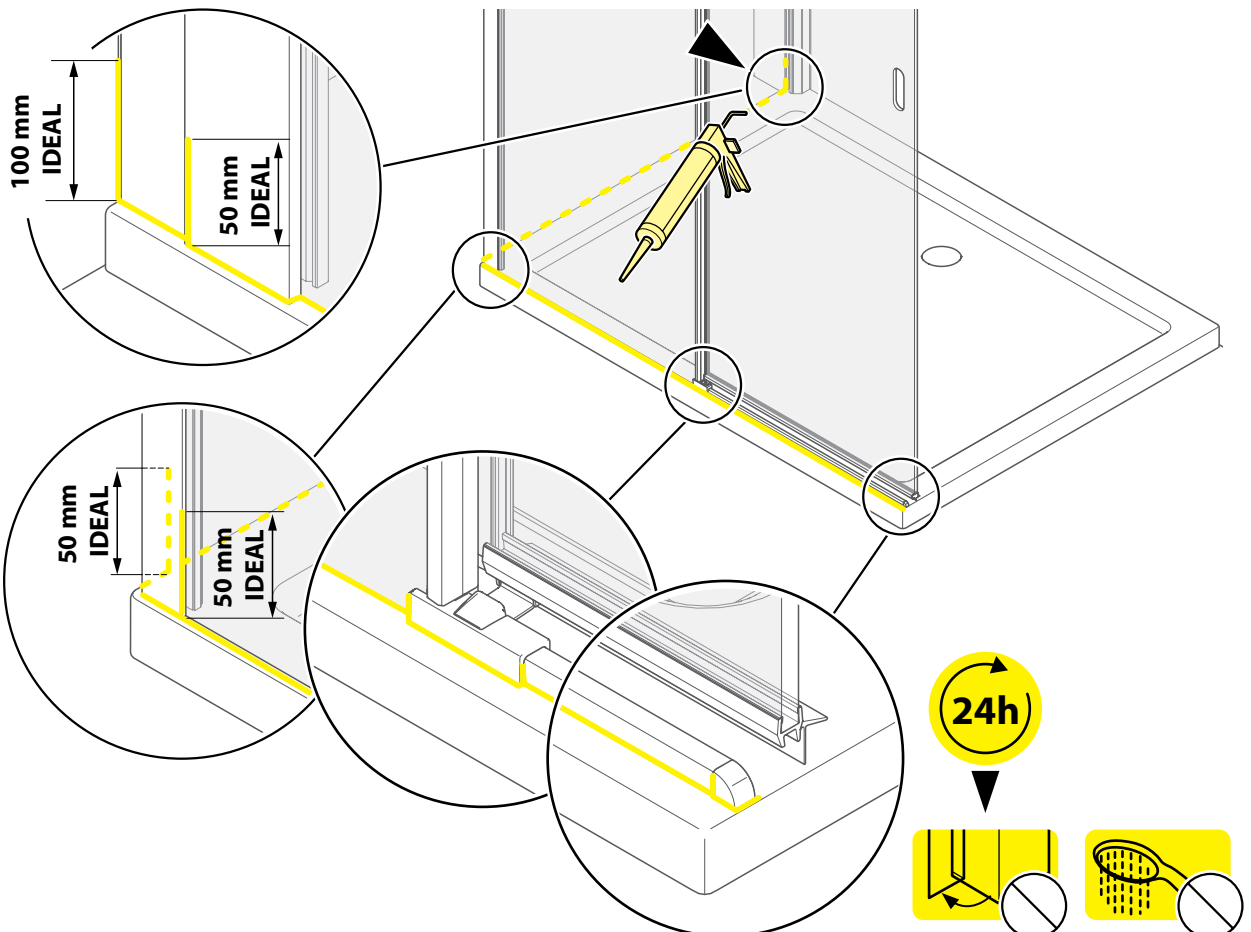


42



27

43



CE

- D** Der Produzent behält sich jederzeit das Recht, ohne Vorbescheid Abänderungen vorzunehmen.
- GB** The producer reserves the right to modify the product at any time without prior notice.
- PL** Producent zastrzega sobie prawo do wprowadzania zmian bez uprzedniego powiadomienia.