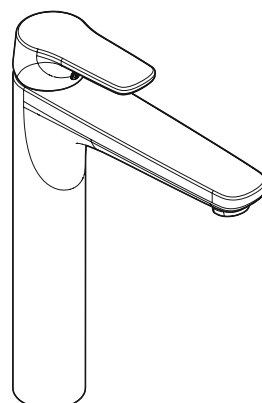
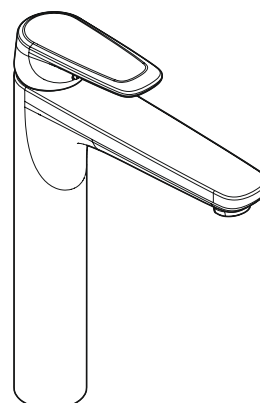


- ⒸZ Návod k instalaci a k použití
- Ⓔ Instrucciones de montaje y de manejo
- Ⓕ Instructions de montage et mode d'emploi
- ⒼB Installation and operating instructions
- Ⓕ Szerelési és használati utasítás
- Ⓘ Istruzioni di montaggio e per l'uso
- ⒼNL Montagehandleiding en Gebruiksaanwijzing
- ⒼNO Monterings- og bruksanvisning
- ⒼPL Instrukcja montażu i obsługi
- ⒸU Руководство по монтажу и эксплуатации
- ⒸK Návod na montáž a obsluhu



DEXLO



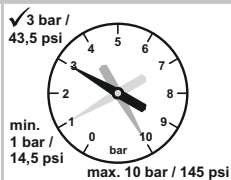
DESXLO

DIN EN 806
DIN EN 1717
DIN 1988
Global Standards

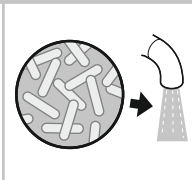
i
VIGOUR
Bedien- und
Montageanleitung



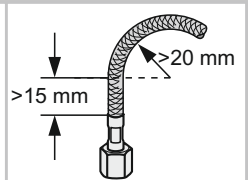
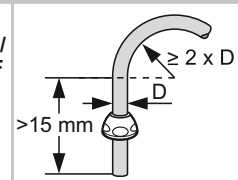
max. 70 °C / 158 °F
min. 60 °C / 140 °F



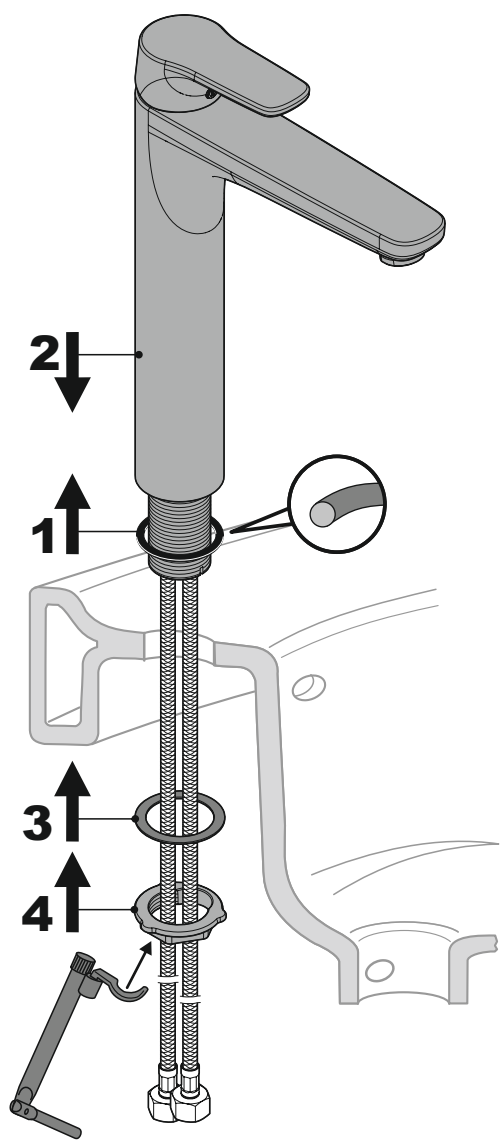
3 bar / 43,5 psi
min. 1 bar / 14,5 psi
max. 10 bar / 145 psi



max. 70 °C / 158 °F



1.



2.

